

Part Number	A	B	C	D	E	F	G	H	Approx. Weight (Kg)
CHM_S_150	150	290	372	510	233	265	170.5	20	97.9
CHM_S_200	200	400	450	610	283	340	221.5	24	180.6
CHM_S_250	250	492	545	750	333	395	276.5	26	303.4
CHM_S_300	300	542	545	750	383	445	327.5	26	359.3

Magnet Specification

Magnet Grade	DM7
Flux Density	>12000Gs

Structure Details

Material	SS304
Surface Treatment	Sublimation
Seal Material	Silicon
Finishing	Ra 32-4 µ in
Welding	Continuous with P240 radial polish

Title: Chutemagnet Sanitary Master Drawing	Article No.:
--	--------------

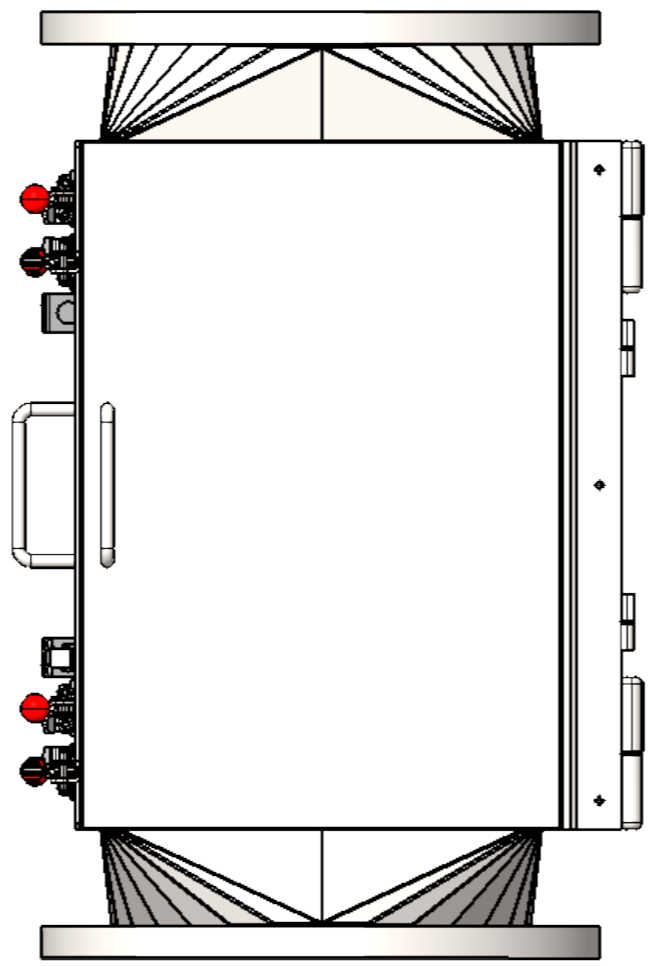
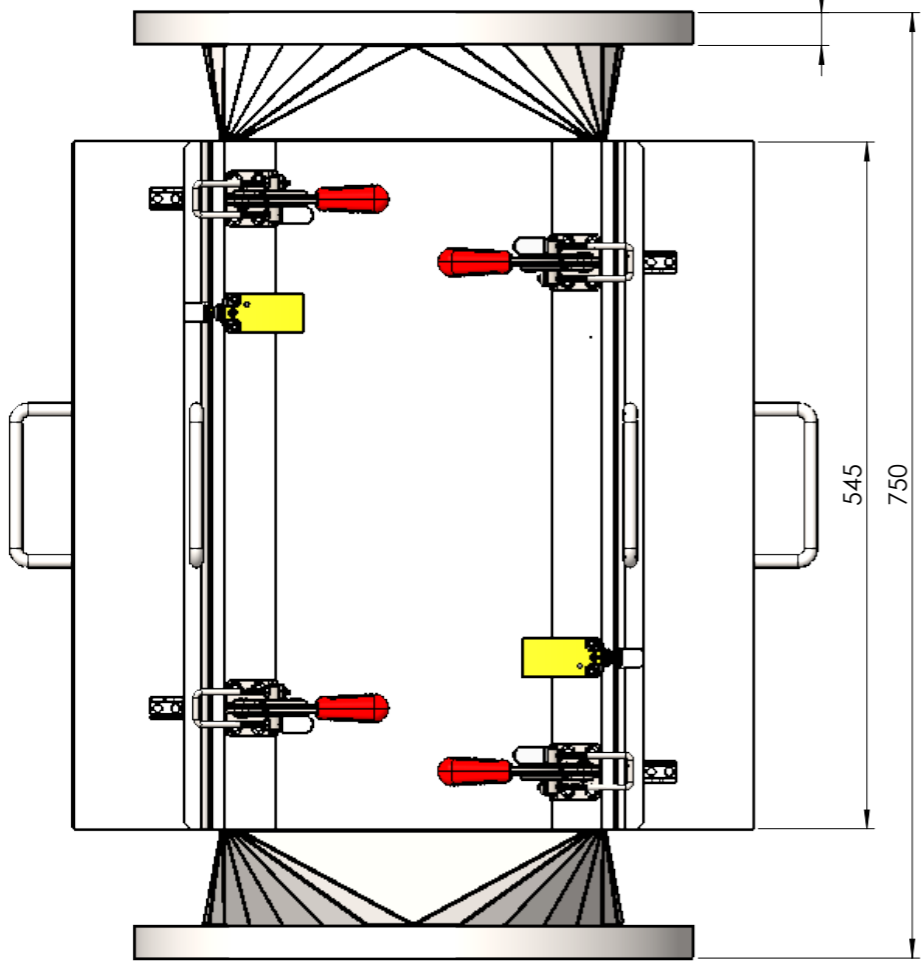
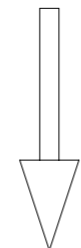
Deburr and break sharp edges		ISO 2768m-k	Material:
------------------------------	--	-------------	-----------

<p>dutch magnetics IN PARTNERSHIP WITH BRONNEBERG</p> <p>Branchweg 3, 5705 DR Helmond, The Netherlands +31 492-591900 www.dutchmagnetics.com</p>	Scale 1:10	Units: [mm]	Treatment:	
	Drwn By: SD	Date: 11/24/2023	Finish:	
	Appr By:	Date:	Weight: 180.61 kg	A4
	Drawing No.: CHM_S_DXXX			

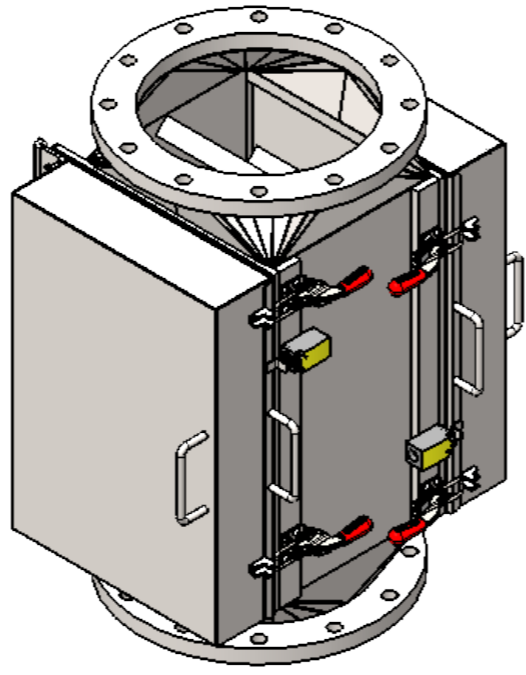
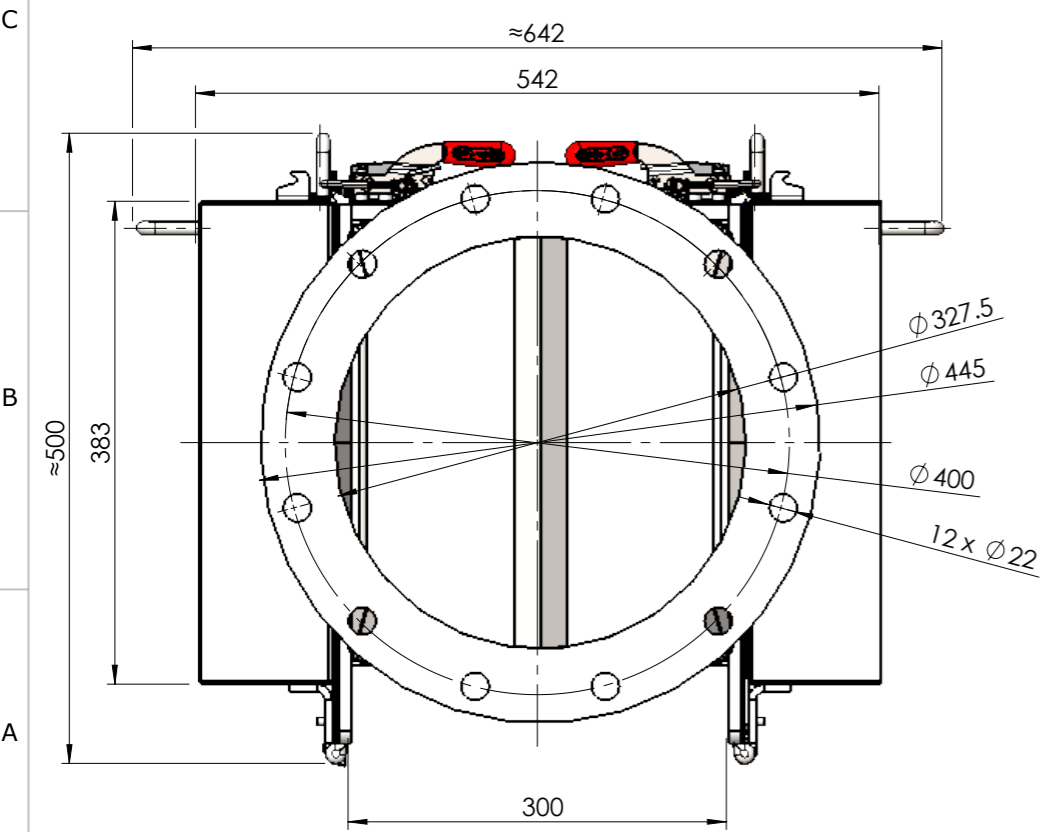
© Dutch Magnetics. All rights reserved. Reproduction in whole or parts is prohibited without the prior written permission of Dutch Magnetics.	State: Under Editing	Rev: 0
---	----------------------	--------

REV.	DESCRIPTION	DATE	REV. BY
0			

MAT. FLOW



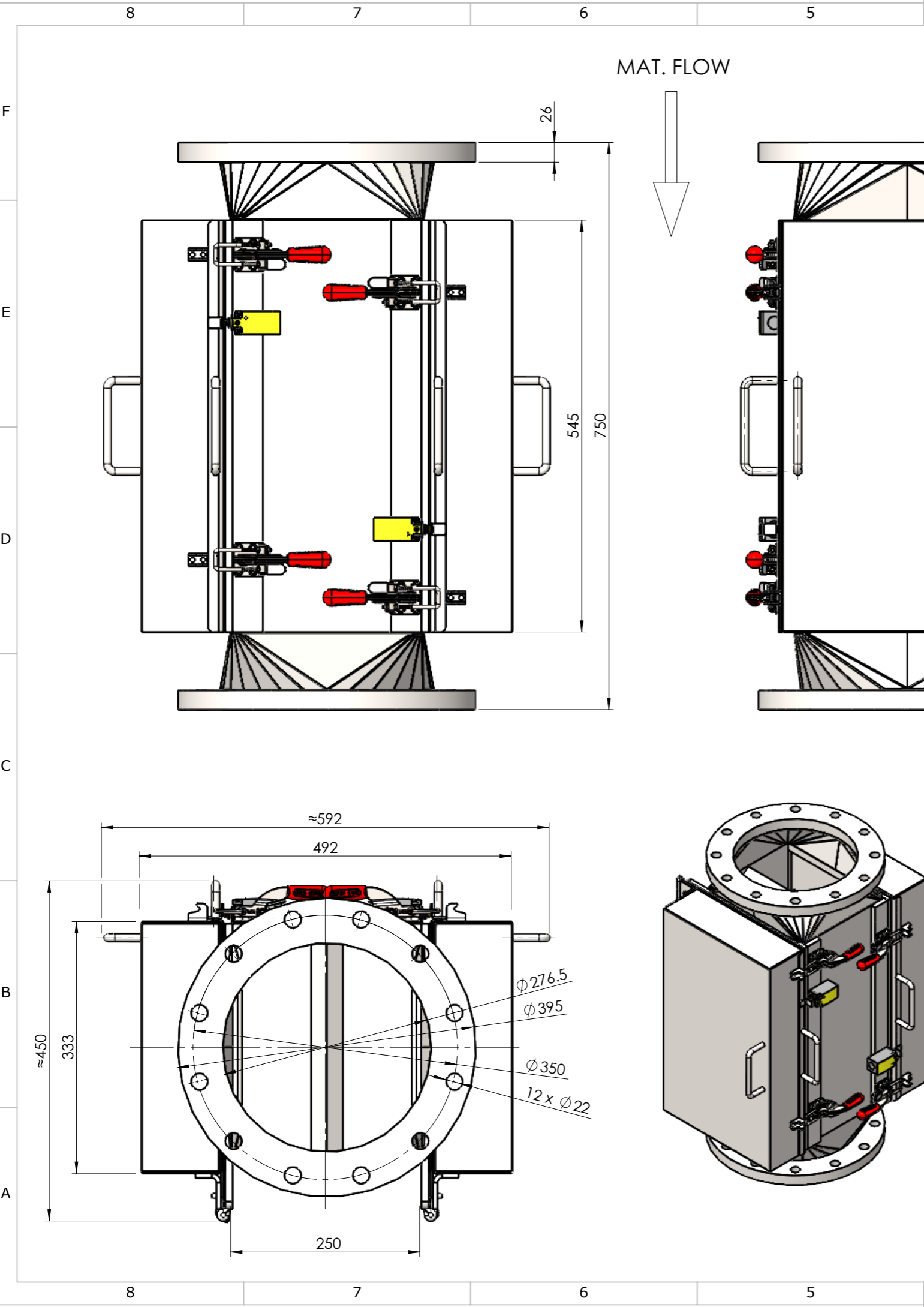
Magnet Specification	
Magnet Grade	DM7
Flux Density	>12000Gs
Structure Details	
Material	SS304
Surface Treatment	Sublimation
Seal Material	Silicon
Finishing	Ra 32-4 μ in
Welding	Continuous with P240 radial polish



Notes:
 Safety Position Switch : Eaton Moeller® series LSE11
 24V/DC 0.2 A (1x NC / 1x NO)
 Product is not suitable for High Pressure
 Flanges : EN 1092-1 Type 01 DN300, PN10

Title: Chutemagnet Sanitary 300 Master Drawing		Article No.:	
Deburr and break sharp edges		ISO 2768m-k	Material:
 IN PARTNERSHIP WITH BRONNEBERG Branchweg 3, 5705 DR Helmond, The Netherlands +31627746820 www.dutchmagnetics.com		Scale 1:6	Units: [mm] Treatment:
		Drwn By: SD	Date: 14-03-2024 Finish:
		Appr By:	Date: Weight: 359.33 kg
Drawing No.: CHM_S_D300_Master Drawing			A3
State: Under Editing			Rev: 0

© Dutch Magnetics. All rights reserved. Reproduction in whole or parts is prohibited without the prior written permission of Dutch Magnetics.



REV.	DESCRIPTION	DATE	REV. BY
0			

Magnet Specification	
Magnet Grade	DM7
Flux Density	>12000Gs
Structure Details	
Material	SS304
Surface Treatment	Sublimation
Seal Material	Silicon
Finishing	Ra 32-4 μ in
Welding	Continuous with P240 radial polish

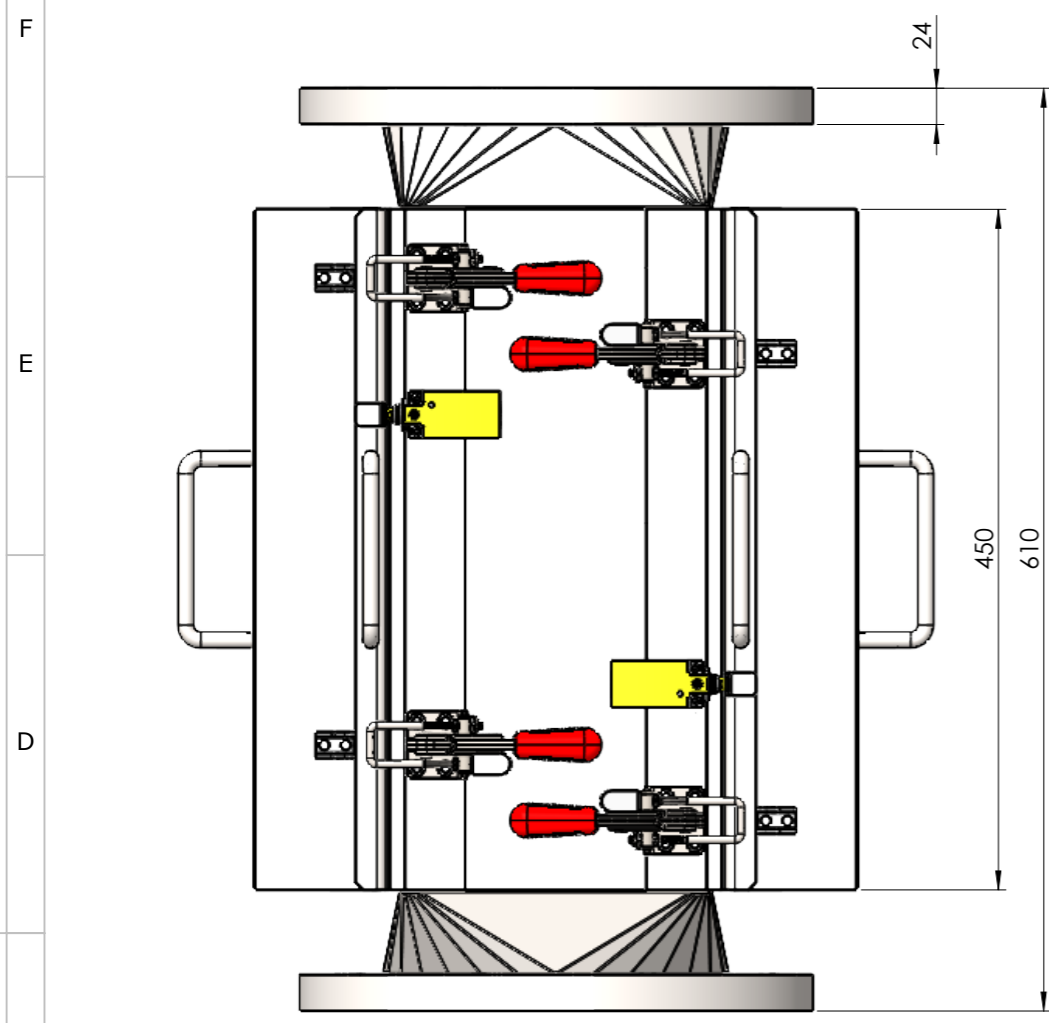
Notes:
 Safety Position Switch : Eaton Moeller® series LSE11
 24V/DC 0.2 A (1x NC / 1x NO)
 Product is not suitable for High Pressure

Flanges : EN 1092-1 Type 01 DN250, PN10

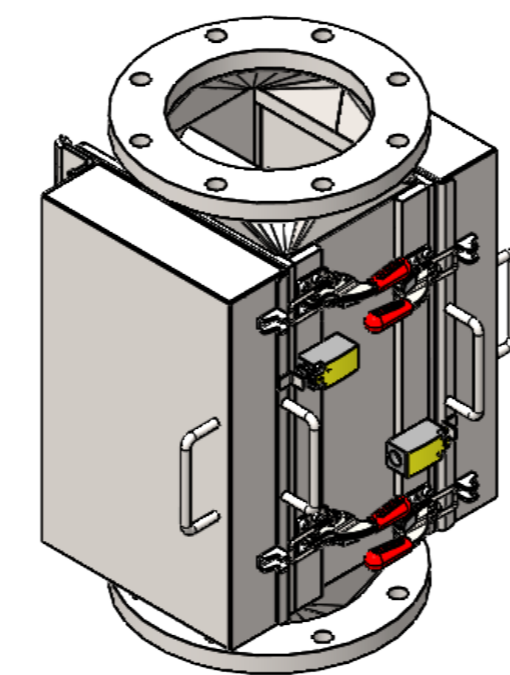
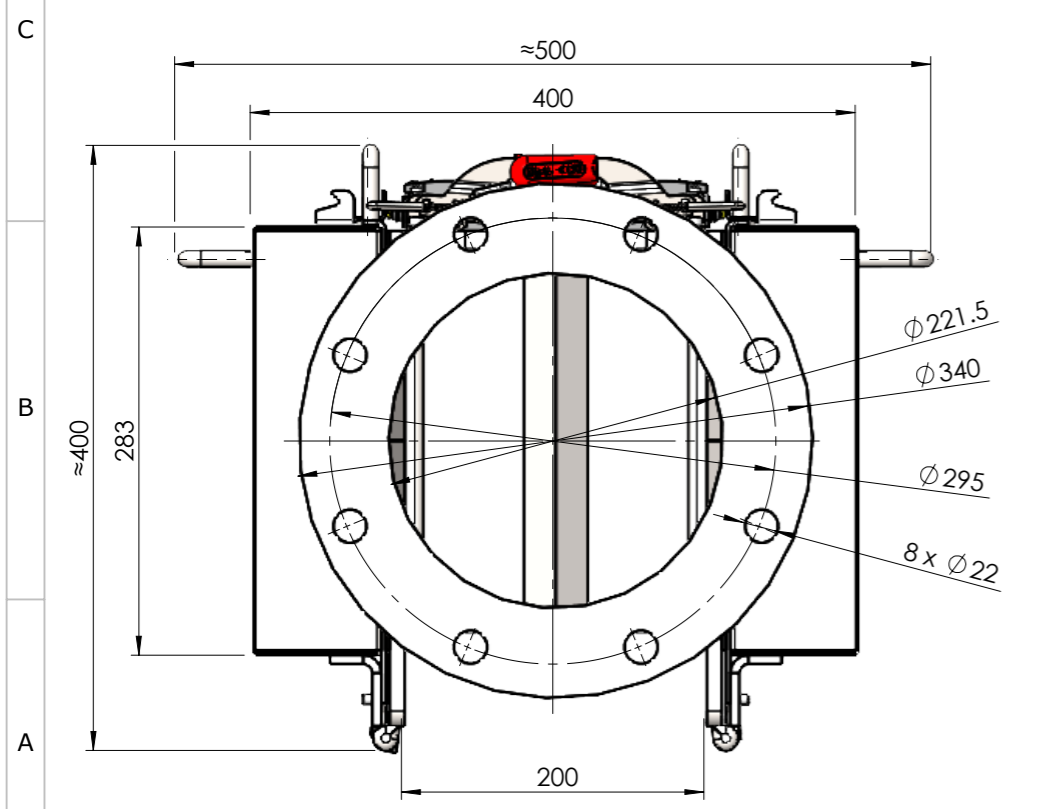
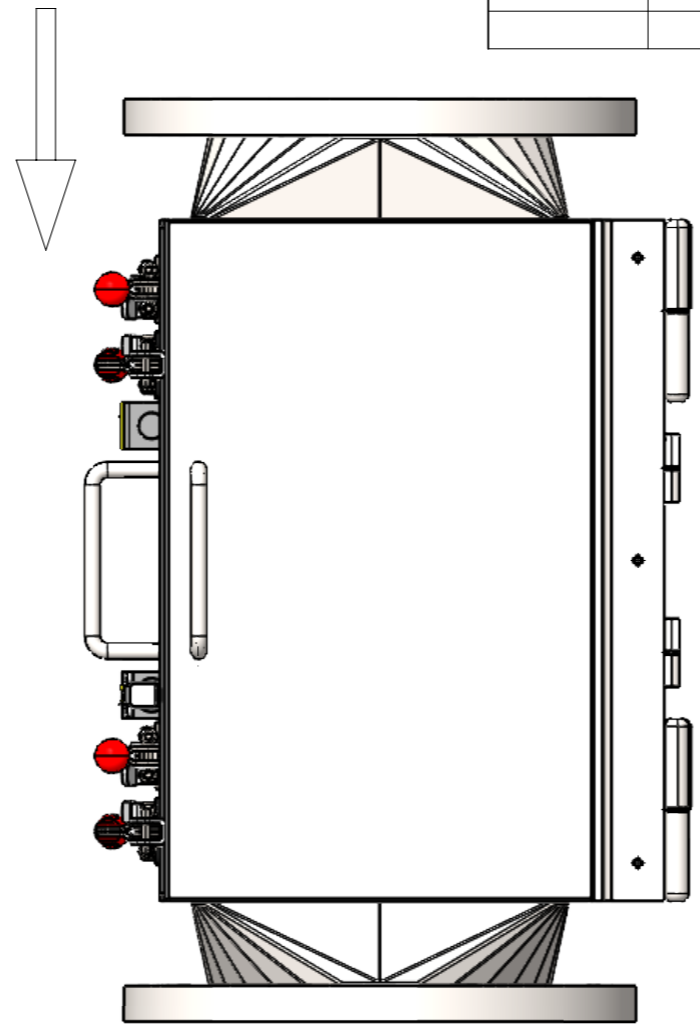
Title: Chutemagnet Sanitary 250 Master Drawing		Article No.:	
Deburr and break sharp edges		ISO 2768m-k	Material:
 IN PARTNERSHIP WITH BRONNEBERG Branchweg 3, 5705 DR Helmond, The Netherlands +31627746820 www.dutchmagnetics.com		Scale 1:6	Units: [mm] Treatment:
		Drwn By: SD	Date: 14-03-2024 Finish:
Appr By:	Date:	Weight: 303.44 kg	A3
Drawing No.: CHM_S_D250_Master Drawing			
State: Under Editing			Rev: 0

© Dutch Magnetics. All rights reserved. Reproduction in whole or parts is prohibited without the prior written permission of Dutch Magnetics.

REV.	DESCRIPTION	DATE	REV. BY
0			



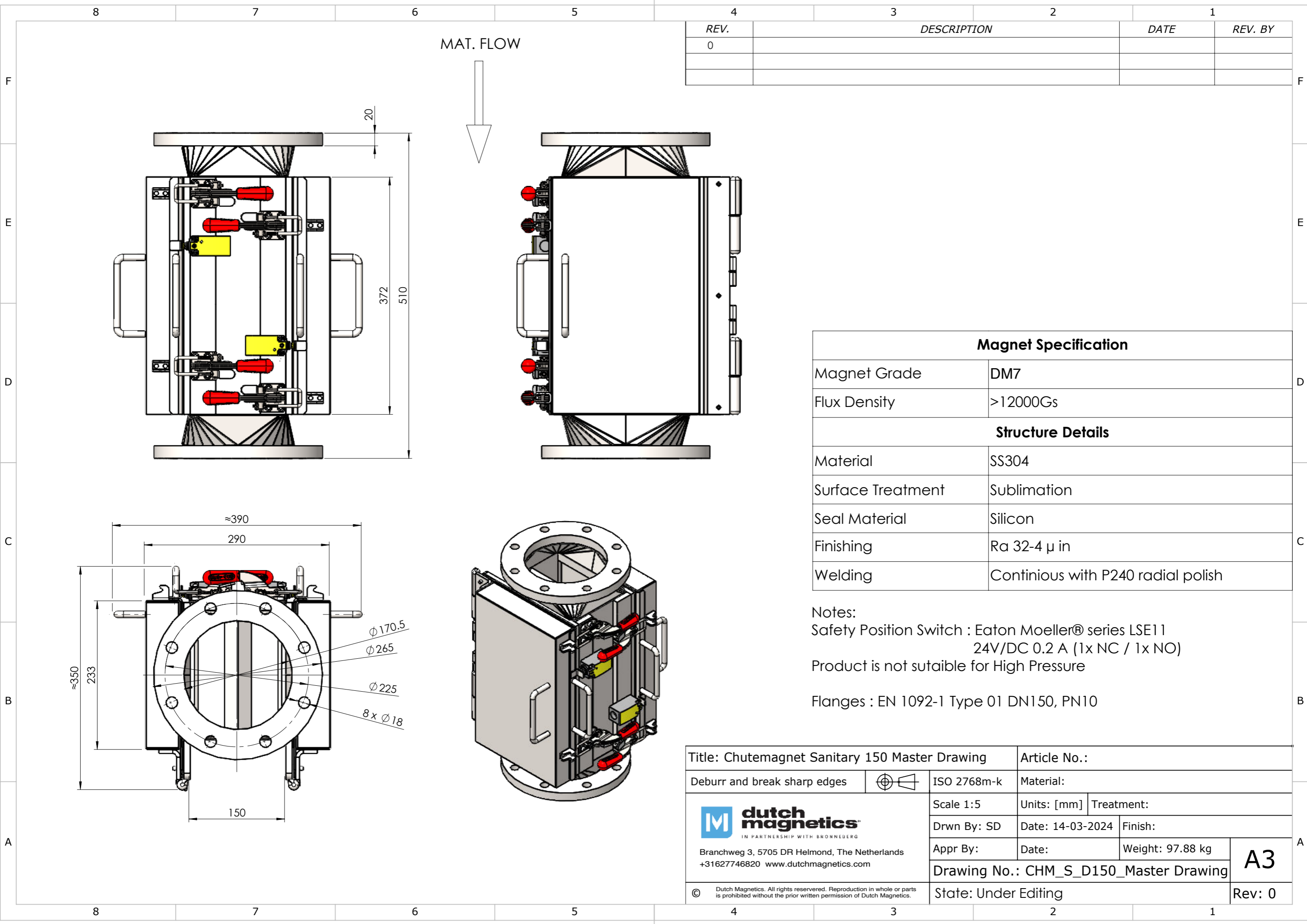
MAT. FLOW



Magnet Specification	
Magnet Grade	DM7
Flux Density	>12000Gs
Structure Details	
Material	SS304
Surface Treatment	Sublimation
Seal Material	Silicon
Finishing	Ra 32-4 μ in
Welding	Continuous with P240 radial polish

Notes:
 Safety Position Switch : Eaton Moeller® series LSE11
 24V/DC 0.2 A (1x NC / 1x NO)
 Product is not suitable for High Pressure
 Flanges : EN 1092-1 Type 01 DN200, PN10

Title: Chutemagnet Sanitary 200 Master Drawing		Article No.:	
Deburr and break sharp edges		ISO 2768m-k	Material:
 IN PARTNERSHIP WITH BRONNEBERG Branchweg 3, 5705 DR Helmond, The Netherlands +31627746820 www.dutchmagnetics.com		Scale 1:5	Units: [mm] Treatment:
		Drwn By: SD	Date: 11/24/2023 Finish:
Appr By:	Date:	Weight: 180.61 kg	A3
Drawing No.: CHM_S_D200_Master Drawing			
State: Under Editing			Rev: 0



REV.	DESCRIPTION	DATE	REV. BY
0			

Magnet Specification	
Magnet Grade	DM7
Flux Density	>12000Gs
Structure Details	
Material	SS304
Surface Treatment	Sublimation
Seal Material	Silicon
Finishing	Ra 32-4 μ in
Welding	Continuous with P240 radial polish

Notes:
 Safety Position Switch : Eaton Moeller® series LSE11
 24V/DC 0.2 A (1x NC / 1x NO)
 Product is not suitable for High Pressure
 Flanges : EN 1092-1 Type 01 DN150, PN10

Title: Chutemagnet Sanitary 150 Master Drawing		Article No.:	
Debur and break sharp edges		ISO 2768m-k	Material:
 dutch magnetics <small>IN PARTNERSHIP WITH BRONNEBERG</small> Branchweg 3, 5705 DR Helmond, The Netherlands +31627746820 www.dutchmagnetics.com	Scale 1:5	Units: [mm]	Treatment:
	Drwn By: SD	Date: 14-03-2024	Finish:
Appr By:	Date:	Weight: 97.88 kg	A3
Drawing No.: CHM_S_D150_Master Drawing			
State: Under Editing			Rev: 0

© Dutch Magnetics. All rights reserved. Reproduction in whole or parts is prohibited without the prior written permission of Dutch Magnetics.