

| Part Number | A   | B   | C   | D   | E   | F   | G   | Approx. Weight (Kg) |
|-------------|-----|-----|-----|-----|-----|-----|-----|---------------------|
| CHM_I_150   | 150 | 285 | 372 | 482 | 233 | 265 | 171 | 84.3                |
| CHM_I_200   | 200 | 395 | 450 | 575 | 283 | 340 | 222 | 157.1               |
| CHM_I_250   | 250 | 487 | 545 | 710 | 333 | 395 | 277 | 272.7               |
| CHM_I_300   | 300 | 537 | 545 | 710 | 383 | 445 | 328 | 323.8               |

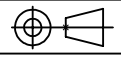
**Magnet Specification**


|              |          |
|--------------|----------|
| Magnet Grade | DM7      |
| Flux Density | >12000Gs |

**Structure Details**

|                   |                                    |
|-------------------|------------------------------------|
| Material          | SS304                              |
| Surface Treatment | Blasted                            |
| Seal Material     | Silicon                            |
| Finishing         | Ra 32-4 μ in                       |
| Welding           | Continuous with P240 radial polish |

Title: Chutemagnet Industrial Master Drawing      Article No.:

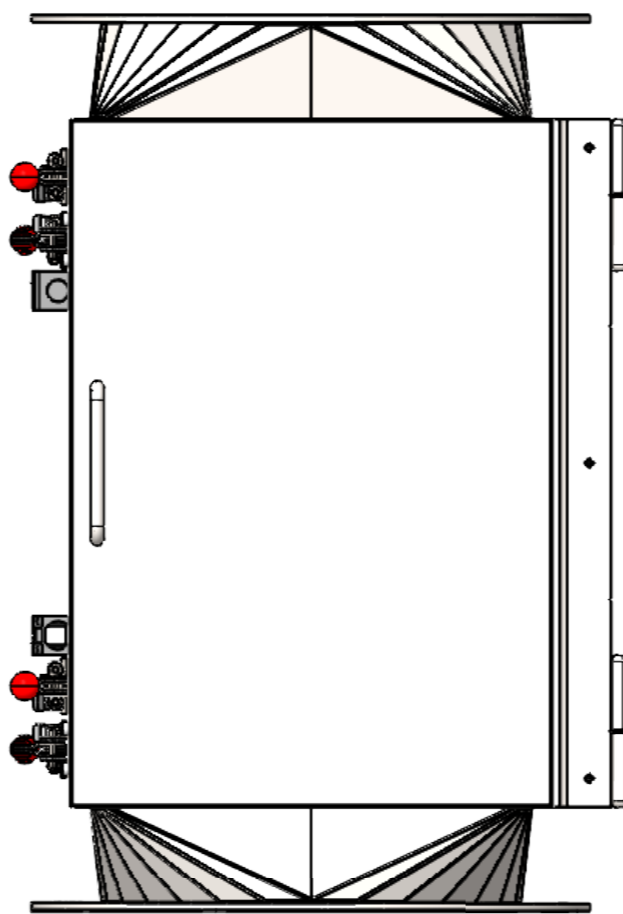
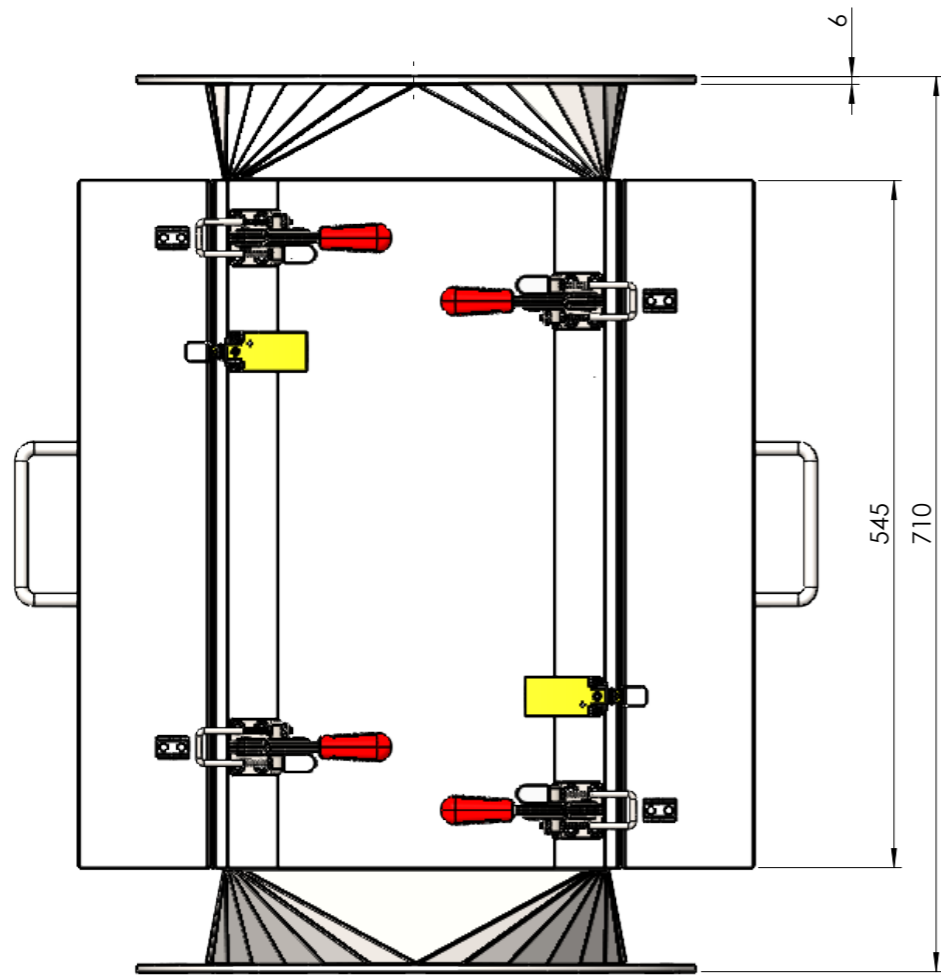
Deburr and break sharp edges            ISO 2768m-k      Material:

|   |                         |                  |                   |           |
|---|-------------------------|------------------|-------------------|-----------|
|  <b>dutch magnetics</b><br><small>IN PARTNERSHIP WITH BRONNEBERG</small><br><br>Branchweg 3, 5705 DR Helmond, The Netherlands<br>+31 492-591900 www.dutchmagnetics.com | Scale 1:10              | Units: [mm]      | Treatment:        |           |
|   | Drwn By: SJ             | Date: 03-05-2024 | Finish:           |           |
|   | Appr By:                | Date:            | Weight: 157.09 kg | <b>A4</b> |
|   | Drawing No.: CHM_I_DXXX |                  |                   |           |

© Dutch Magnetics. All rights reserved. Reproduction in whole or parts is prohibited without the prior written permission of Dutch Magnetics.      State: Under Editing      Rev: 0

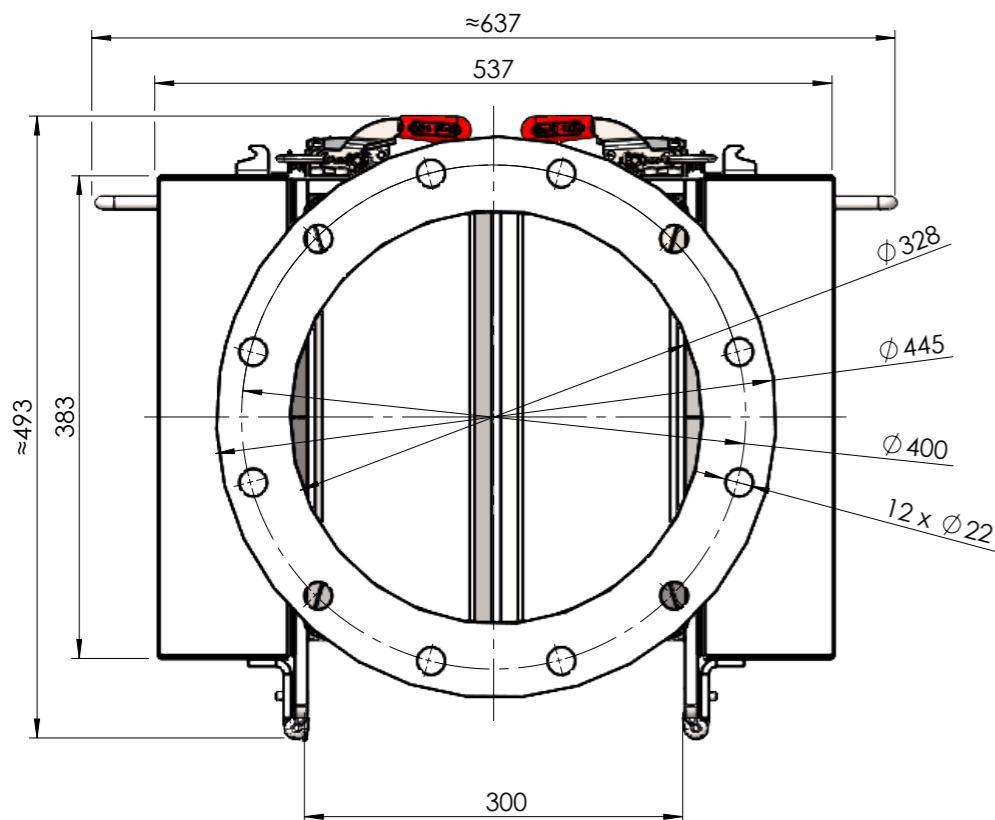
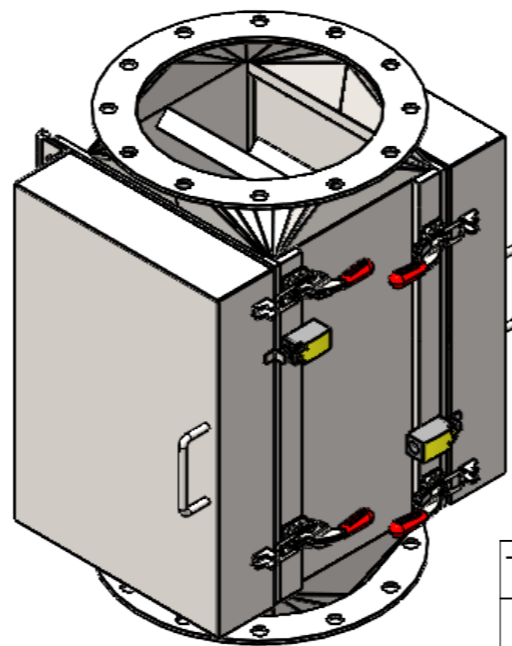
| REV. | DESCRIPTION | DATE | REV. BY |
|------|-------------|------|---------|
| 0    |             |      |         |
|      |             |      |         |

MAT. FLOW



| Magnet Specification |                                    |
|----------------------|------------------------------------|
| Magnet Grade         | DM7                                |
| Flux Density         | >12000Gs                           |
| Structure Details    |                                    |
| Material             | SS304                              |
| Surface Treatment    | Blasted                            |
| Seal Material        | Silicon                            |
| Finishing            | Ra 32-4 μ in                       |
| Welding              | Continuous with P240 radial polish |

Notes:  
 Safety Position Switch : Eaton Moeller® series LSE11  
 24V/DC 0.2 A (1x NC / 1x NO)  
 Product is not suitable for High Pressure

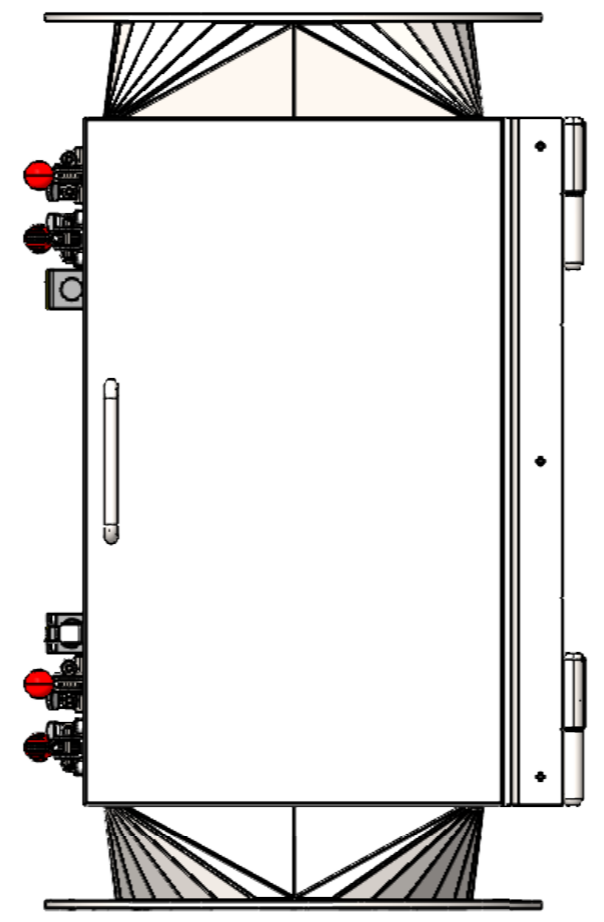
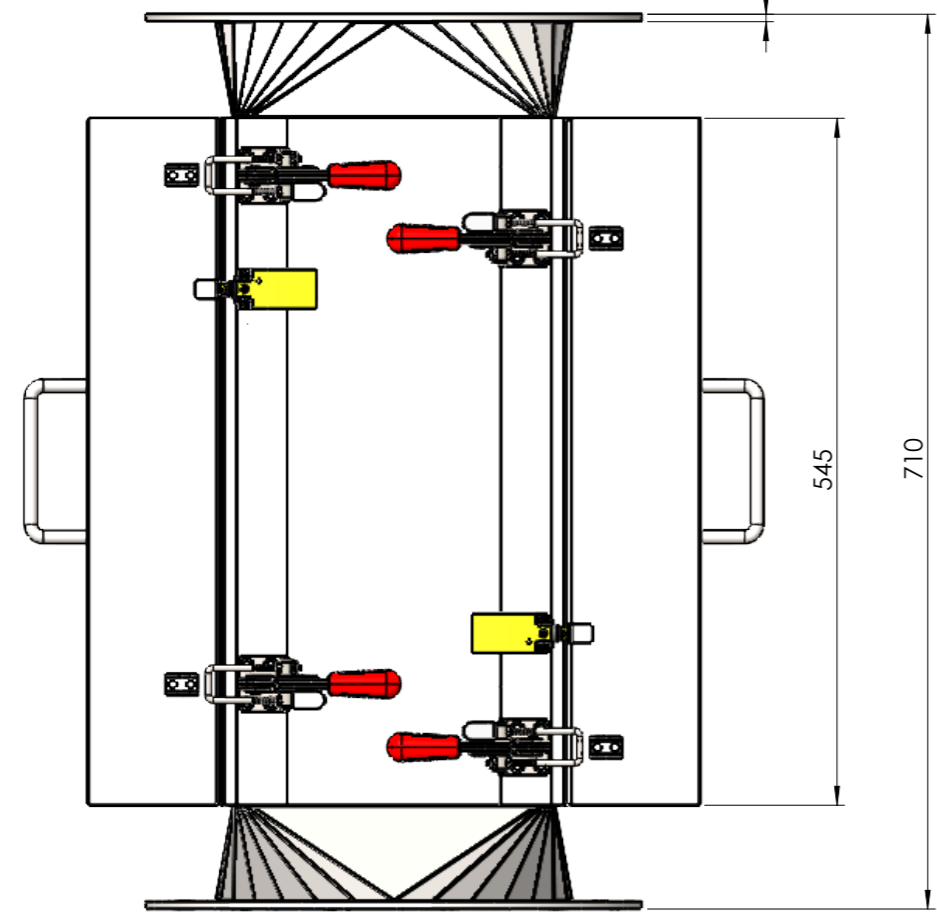
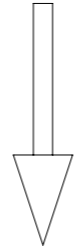


|  |       |                   |                          |
|--|-------|-------------------|--------------------------|
| Title: Chutemagnet Industrial 300 Master Drawing   |       | Article No.:      |                          |
| Deburr and break sharp edges   |       | ISO 2768m-k       | Material:                |
| <br>IN PARTNERSHIP WITH BRONNEBERG<br>Branchweg 3, 5705 DR Helmond, The Netherlands<br>+31627746820 www.dutchmagnetics.com |       | Scale 1:6         | Units: [mm] Treatment:   |
|  |       | Drwn By: SJ       | Date: 03-05-2024 Finish: |
| Appr By:   | Date: | Weight: 323.83 kg | A3                       |
| Drawing No.: CHM_I_D300_Master Drawing   |       |                   |                          |
| State: Under Editing   |       |                   | Rev: 0                   |

© Dutch Magnetics. All rights reserved. Reproduction in whole or parts is prohibited without the prior written permission of Dutch Magnetics.

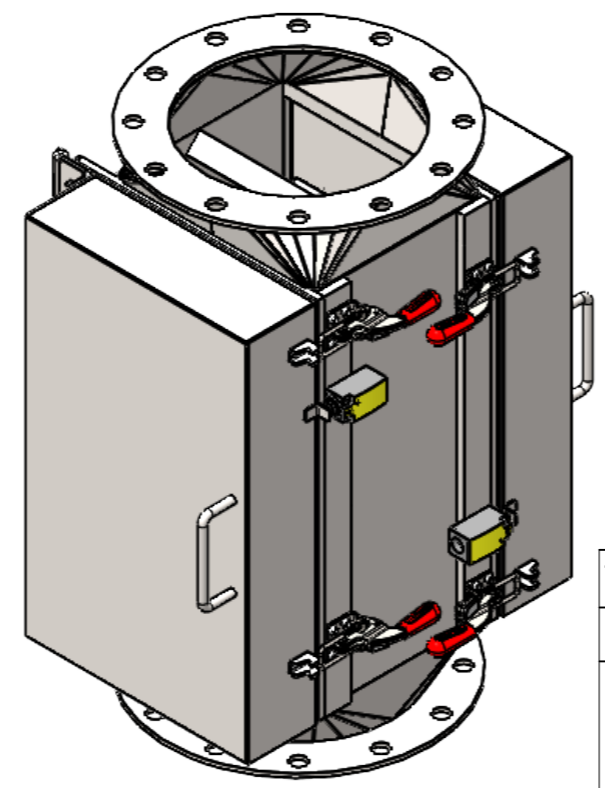
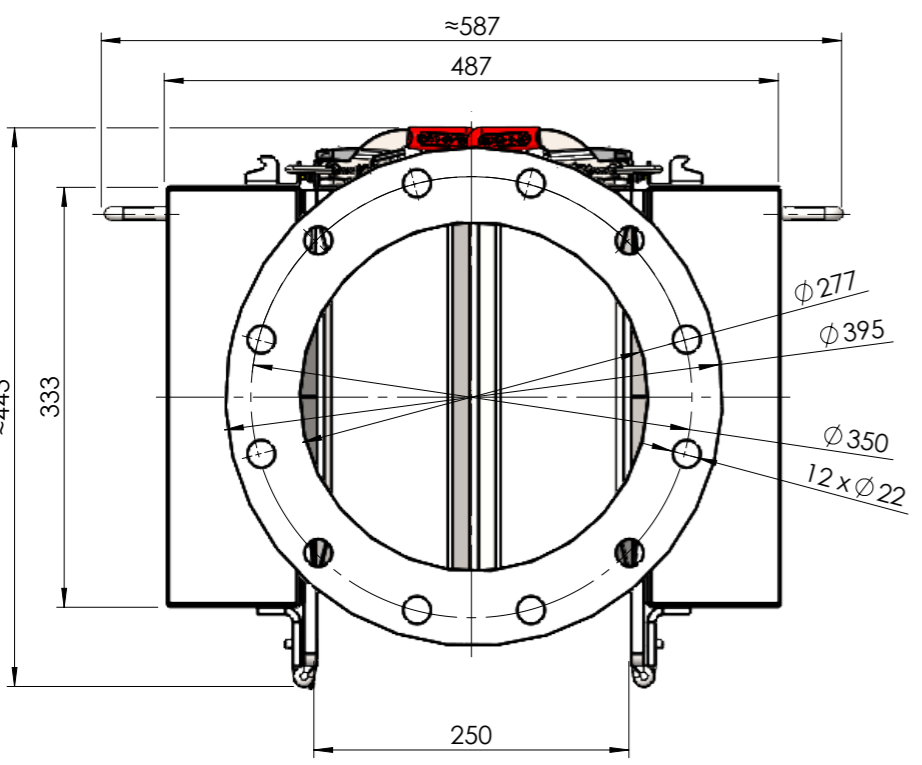
| REV. | DESCRIPTION | DATE | REV. BY |
|------|-------------|------|---------|
| 0    |             |      |         |
|      |             |      |         |
|      |             |      |         |

MAT. FLOW



| Magnet Specification |                                    |
|----------------------|------------------------------------|
| Magnet Grade         | DM7                                |
| Flux Density         | >12000Gs                           |
| Structure Details    |                                    |
| Material             | SS304                              |
| Surface Treatment    | Blasted                            |
| Seal Material        | Silicon                            |
| Finishing            | Ra 32-4 μ in                       |
| Welding              | Continuous with P240 radial polish |

Notes:  
 Safety Position Switch : Eaton Moeller® series LSE11  
 24V/DC 0.2 A (1x NC / 1x NO)  
 Product is not suitable for High Pressure

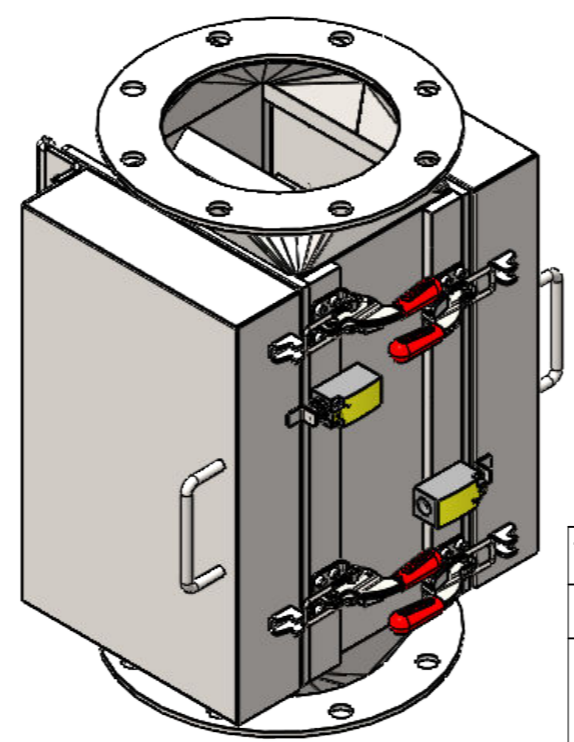
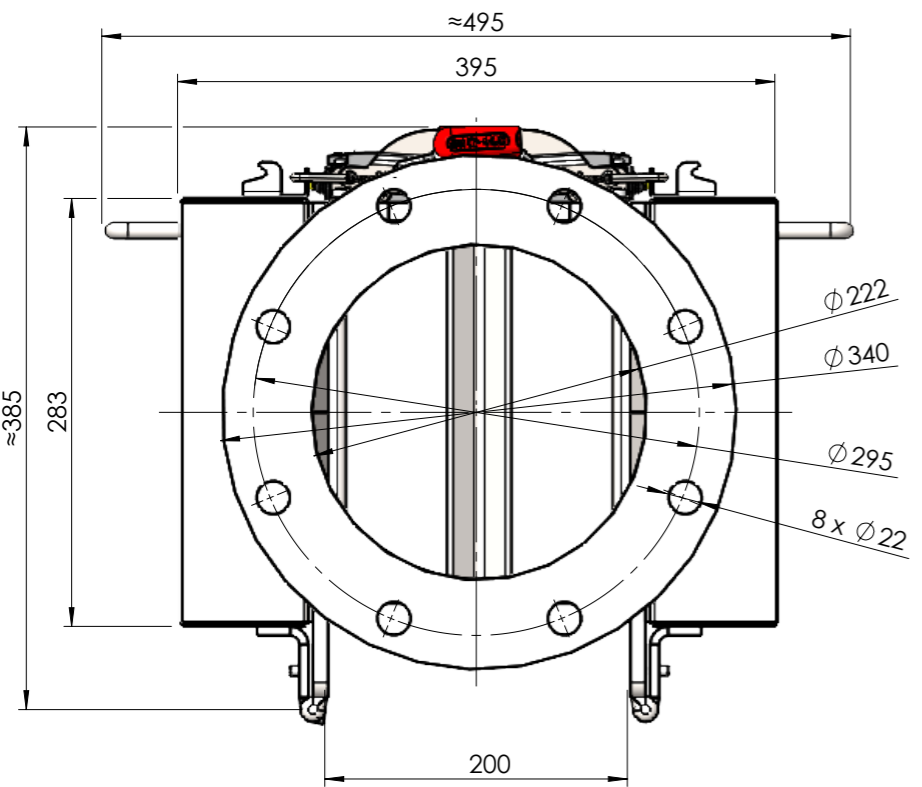
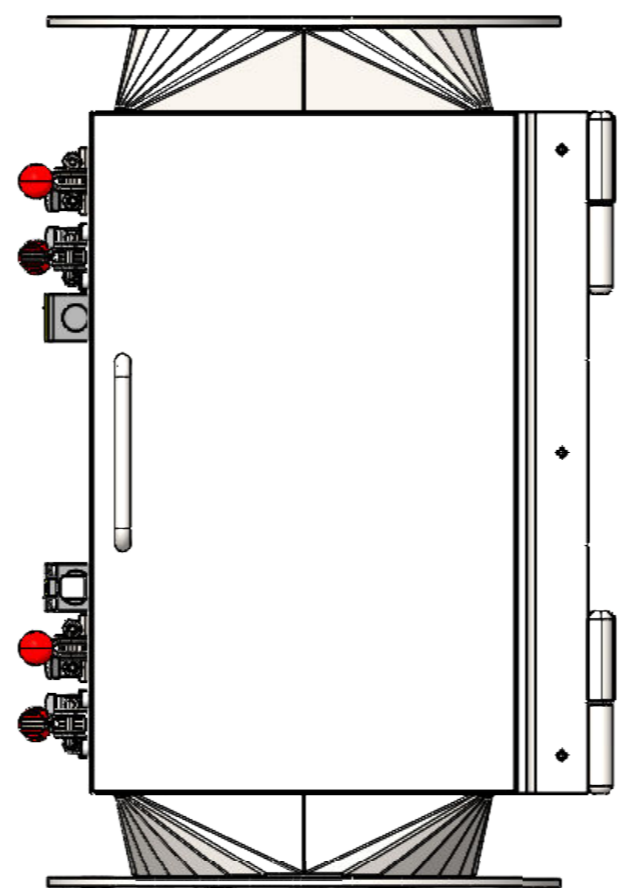
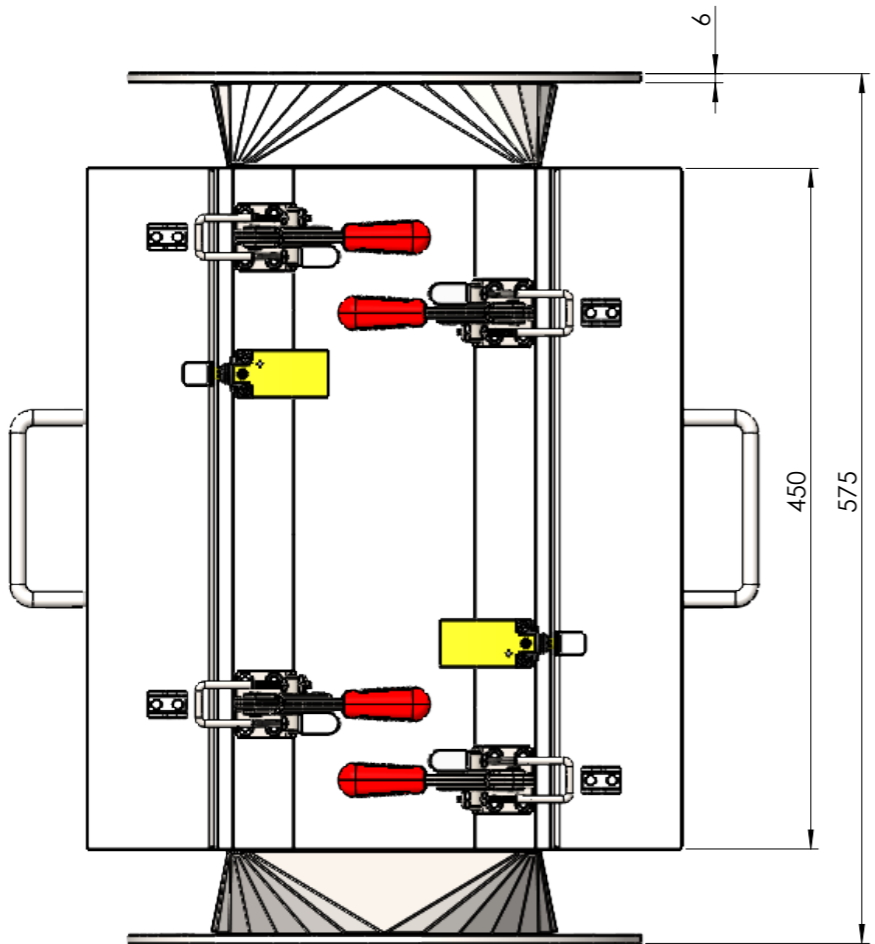
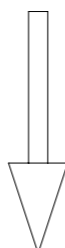


|  |             |                   |  |
|--|-------------|-------------------|--|
| Title: Chutemagnet Industrial 250 Master Drawing   |             | Article No.:      |  |
| Deburr and break sharp edges   |             | ISO 2768m-k       | Material:  |
| <br>IN PARTNERSHIP WITH BRONNEBERG<br>Branchweg 3, 5705 DR Helmond, The Netherlands<br>+31627746820 www.dutchmagnetics.com | Scale 1:6   | Units: [mm]       | Treatment:   |
|  | Drwn By: SJ | Date: 03-05-2024  | Finish:  |
| Appr By:   | Date:       | Weight: 272.36 kg | <div style="font-size: 2em; font-weight: bold; text-align: center;">A3</div> |
| Drawing No.: CHM_I_D250_Master Drawing   |             |                   |  |
| State: Under Editing   |             |                   | Rev: 0   |

© Dutch Magnetics. All rights reserved. Reproduction in whole or parts is prohibited without the prior written permission of Dutch Magnetics.

| REV. | DESCRIPTION | DATE | REV. BY |
|------|-------------|------|---------|
| 0    |             |      |         |
|      |             |      |         |

MAT. FLOW

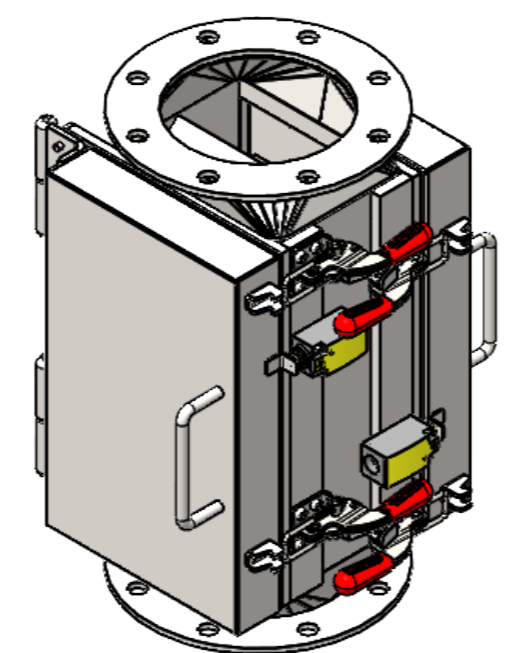
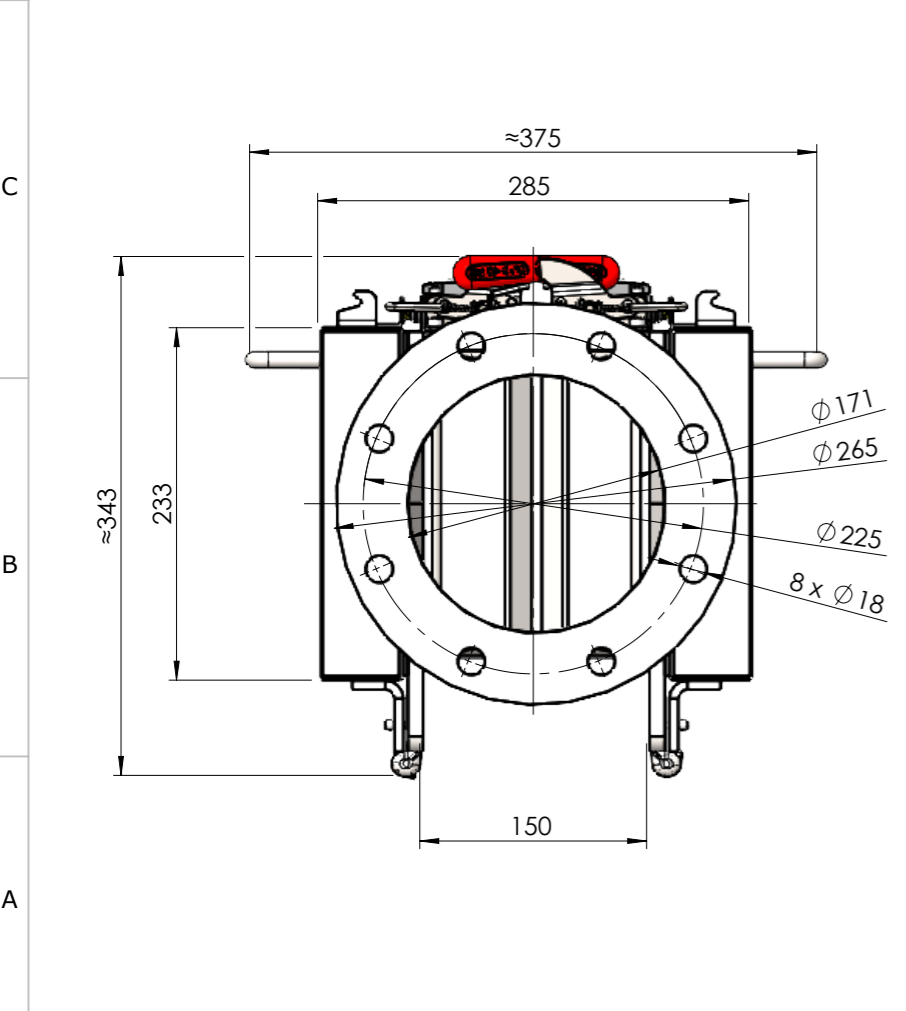
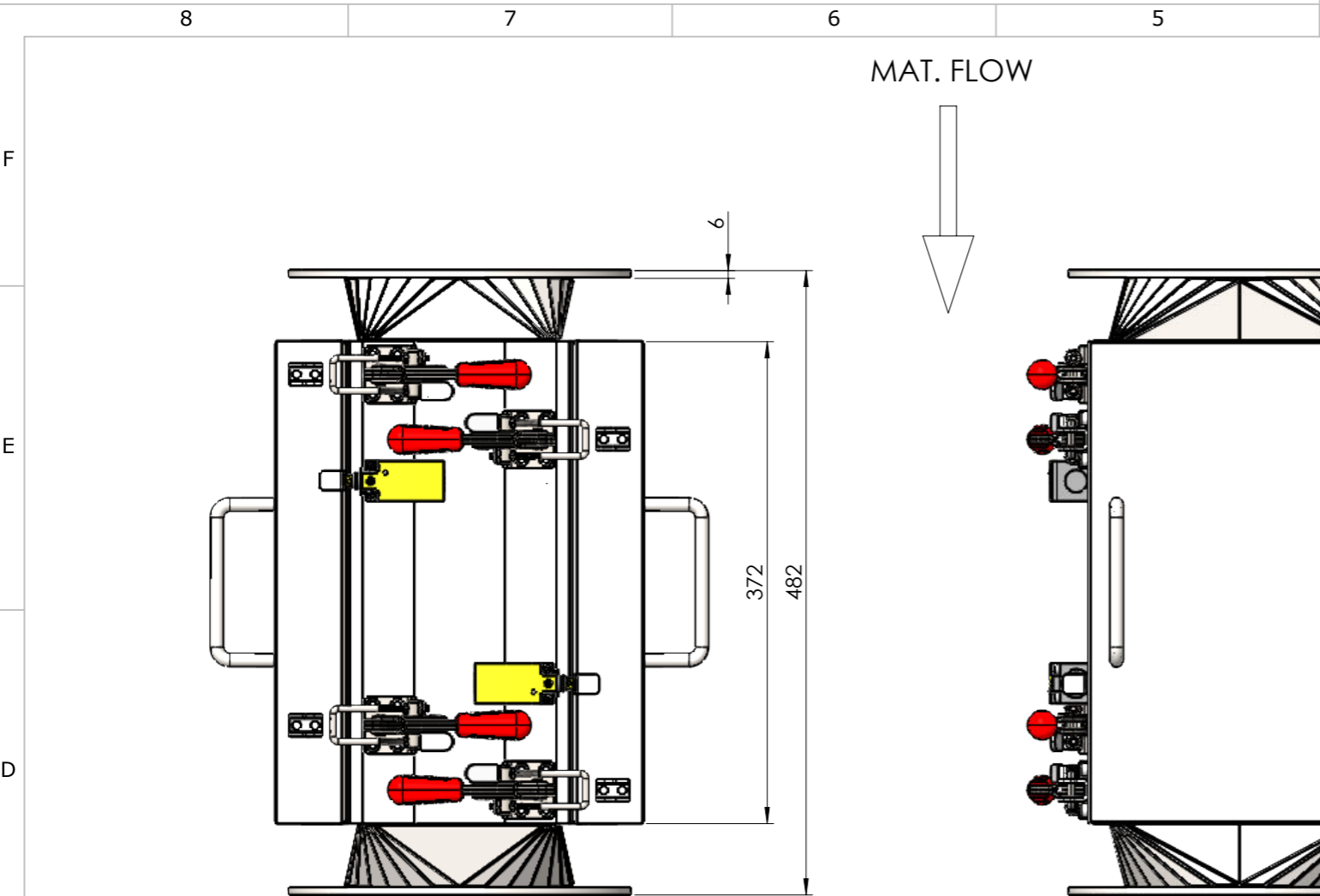


| Magnet Specification |                                    |
|----------------------|------------------------------------|
| Magnet Grade         | DM7                                |
| Flux Density         | >12000Gs                           |
| Structure Details    |                                    |
| Material             | SS304                              |
| Surface Treatment    | Blasted                            |
| Seal Material        | Silicon                            |
| Finishing            | Ra 32-4 $\mu$ in                   |
| Welding              | Continuous with P240 radial polish |

Notes:  
 Safety Position Switch : Eaton Moeller® series LSE11  
 24V/DC 0.2 A (1x NC / 1x NO)  
 Product is not suitable for High Pressure

|  |             |                   |            |
|--|-------------|-------------------|------------|
| Title: Chutemagnet Industrial 200 Master Drawing   |             | Article No.:      |            |
| Deburr and break sharp edges   |             | ISO 2768m-k       | Material:  |
| <br>IN PARTNERSHIP WITH BRONNEBERG<br>Branchweg 3, 5705 DR Helmond, The Netherlands<br>+31627746820 www.dutchmagnetics.com | Scale 1:5   | Units: [mm]       | Treatment: |
|  | Drwn By: SJ | Date: 03-05-2024  | Finish:    |
| Appr By:   | Date:       | Weight: 157.09 kg | <b>A3</b>  |
| Drawing No.: CHM_I_D200_Master Drawing   |             |                   |            |
| State: Under Editing   |             |                   | Rev: 0     |

© Dutch Magnetics. All rights reserved. Reproduction in whole or parts is prohibited without the prior written permission of Dutch Magnetics.



| REV. | DESCRIPTION | DATE | REV. BY |
|------|-------------|------|---------|
| 0    |             |      |         |

| Magnet Specification |                                    |
|----------------------|------------------------------------|
| Magnet Grade         | DM7                                |
| Flux Density         | >12000Gs                           |
| Structure Details    |                                    |
| Material             | SS304                              |
| Surface Treatment    | Blasted                            |
| Seal Material        | Silicon                            |
| Finishing            | Ra 32-4 $\mu$ in                   |
| Welding              | Continuous with P240 radial polish |

Notes:  
 Safety Position Switch : Eaton Moeller® series LSE11  
 24V/DC 0.2 A (1x NC / 1x NO)  
 Product is not suitable for High Pressure

|  |             |                  |            |
|--|-------------|------------------|------------|
| Title: Chutemagnet Industrial 150 Master Drawing   |             | Article No.:     |            |
| Deburr and break sharp edges   |             | ISO 2768m-k      | Material:  |
| <br>IN PARTNERSHIP WITH BRONNEBERG<br>Branchweg 3, 5705 DR Helmond, The Netherlands<br>+31627746820 www.dutchmagnetics.com | Scale 1:5   | Units: [mm]      | Treatment: |
|  | Drwn By: SJ | Date: 03-05-2024 | Finish:    |
| Appr By:   | Date:       | Weight: 84.25 kg | <b>A3</b>  |
| Drawing No.: CHM_I_D150_Master Drawing   |             |                  |            |
| State: Under Editing   |             |                  | Rev: 0     |

© Dutch Magnetics. All rights reserved. Reproduction in whole or parts is prohibited without the prior written permission of Dutch Magnetics.