

4

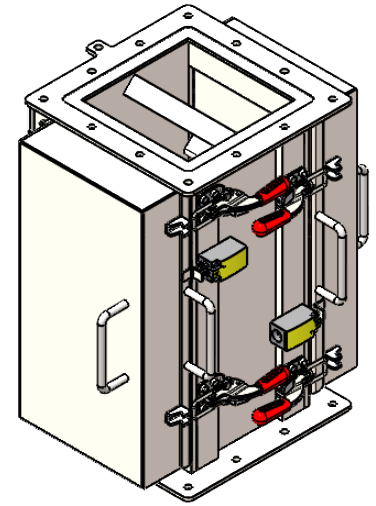
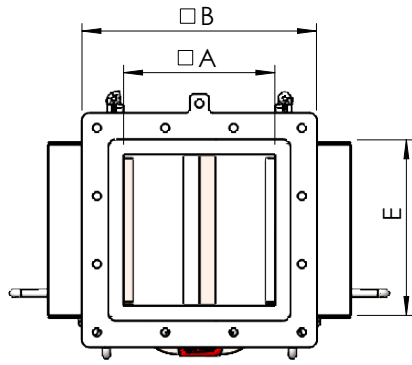
3

2

1

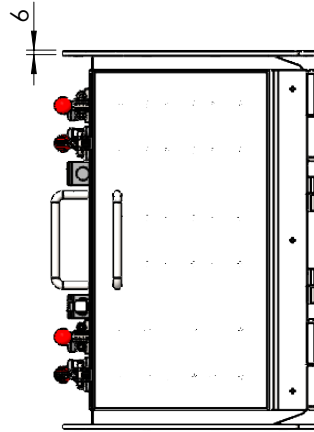
F

F



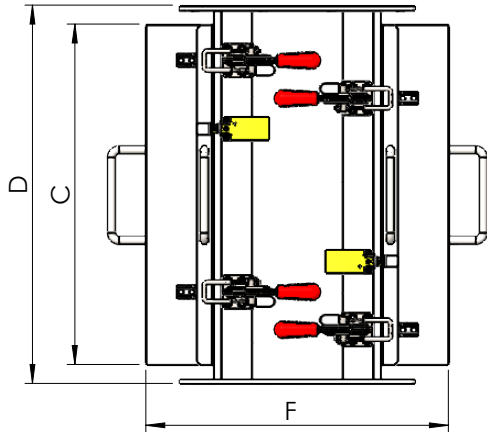
E

E



D

D



Part Number	A	B	C	D	E	F	Approx. Weight (Kg)
CHM_F_200	200	310	450	500	232	400	131.1
CHM_F_250	250	358	550	600	282	450	183.8
CHM_F_300	300	408	550	600	332	500	216.3
CHM_F_400	400	510	550	600	432	600	268.5

Magnet Specification

Magnet Grade	DM35
Flux Density	>12000Gs

Structure Details


Material	SS316L	Surface Treatment	Sublimation
Seal Material	Silicon	Finishing	Ra 32-4 μ in
Welding	Continuous with P240 radial polish		

Recommended Parts

DM20240XXXX	Conical Adaptor
DM20240XXXX	Gasket for Rectangular Flanges

Title: Chutemagnet Food Grade Master Drawing Article No.:

Deburr and break sharp edges  ISO 2768m-k Material:

 **dutch magnetics**
IN PARTNERSHIP WITH BRONNEBERG Scale 1:10 Units: [mm] Treatment:

Drwn By: SJ Date: 03-05-2024 Finish:

Appr By: Date: Weight: 131.12 kg

Drawing No.: CHM_F_XXX

© Dutch Magnetics. All rights reserved. Reproduction in whole or parts is prohibited without the prior written permission of Dutch Magnetics.

State: Under Editing

Rev: 0

4

3

2

1

A

A

4

3

2

1

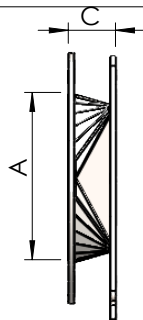
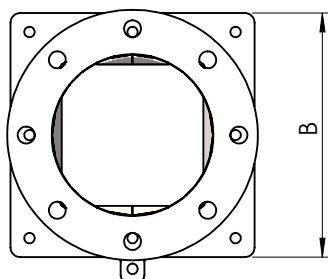
REV.

DESCRIPTION

DATE

REV. BY

0



FLANGE ADAPTER

PART NUMBER

EXECUTION

A

B

C

DM202402394

SQ.150 TO NW80

150

258

100

DM202402399

SQ.150 TO NW100

150

258

85

DM202402388

SQ.150 TO NW125

150

258

65

DM202402389

SQ.150 TO NW150

150

258

50

DM202402404

SQ.200 TO NW200

200

310

65

DM202402408

SQ.250 TO NW250

250

358

75

DM202402414

SQ.300 TO NW300

300

408

85

DM202402413

SQ.400 TO NW350

400

510

160

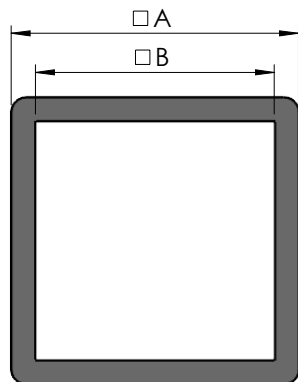
DM202402418

SQ.400 TO NW400

400

510

135



FLANGE GASKET

PART NUMBER

SIZE

□ A

□ B

C

DM202402441

150

190

158

3

DM202402442

200

240

208

3

DM202402443

250

290

258

3

DM202402444

300

340

308

3

DM202402445

400

440

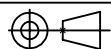
408

3

Title: Chutemagnet FOOD GRADE Master Drawing

Article No.:

Deburr and break sharp edges



ISO 2768m-k

Material:



IN PARTNERSHIP WITH BRONNEBERG

Branchweg 3, 5705 DR Helmond, The Netherlands
+31 492-591900 www.dutchmagnetics.com

Scale 1:10

Units: [mm]

Treatment:

Drwn By: SJ

Date: 25-04-2024

Finish:

Appr By:

Date:

Weight: kg

Drawing No.: BM202402389

A4

© Dutch Magnetics. All rights reserved. Reproduction in whole or parts is prohibited without the prior written permission of Dutch Magnetics.

State: Under Editing

Rev: 0

4

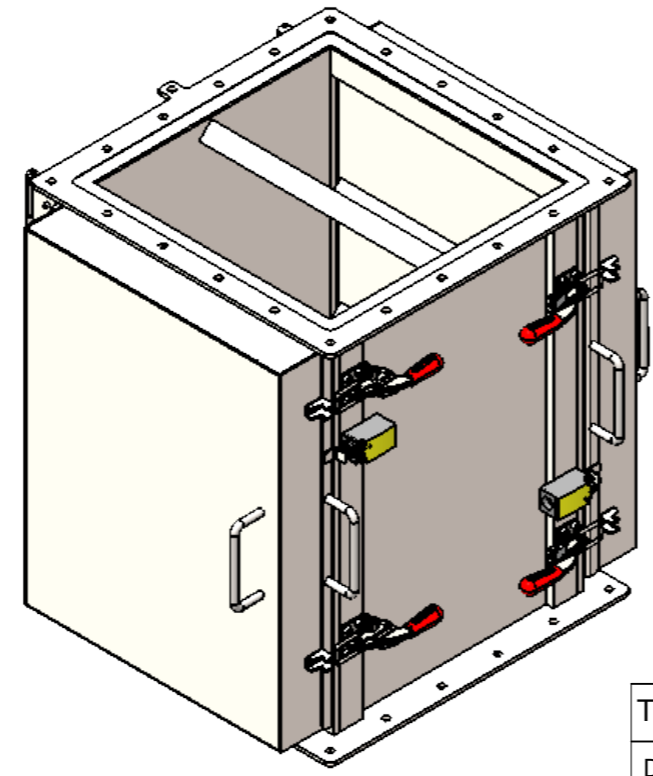
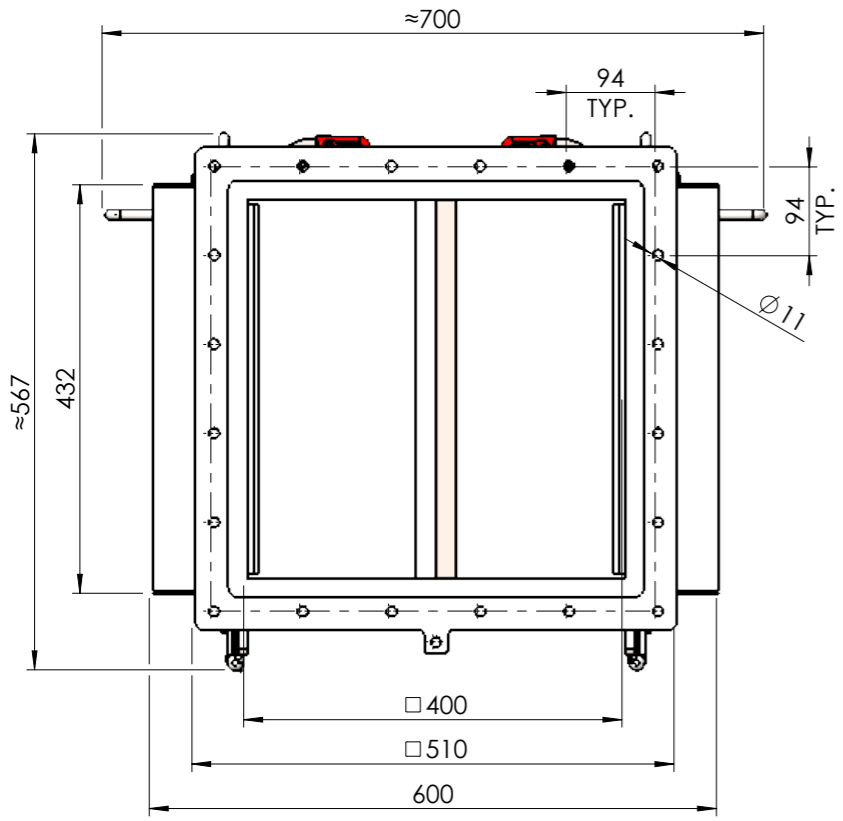
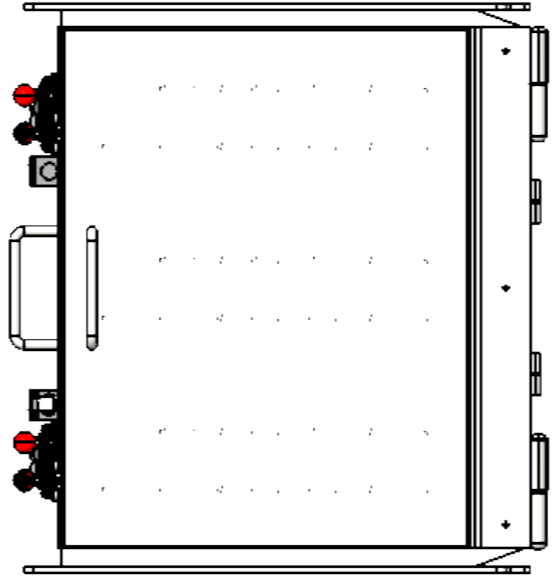
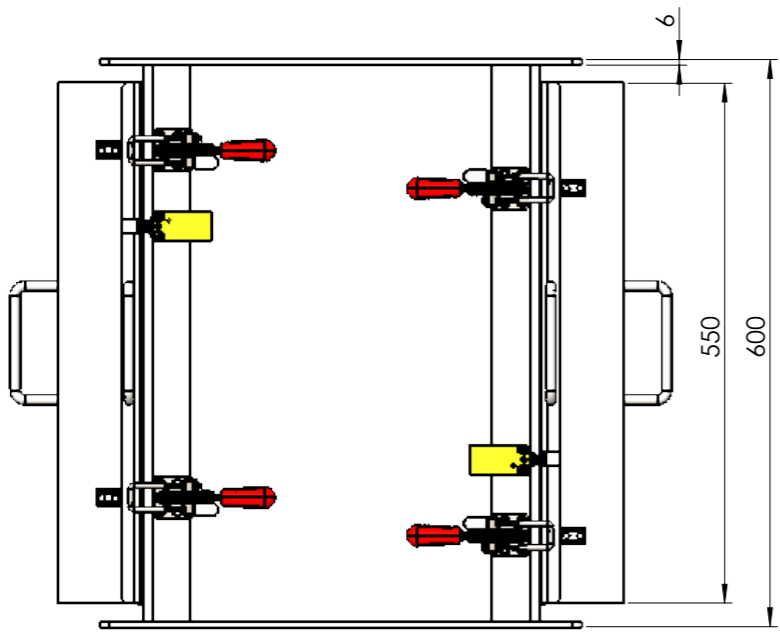
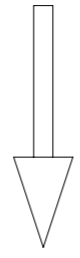
3

2

1

REV.	DESCRIPTION	DATE	REV. BY
0			

MAT. FLOW



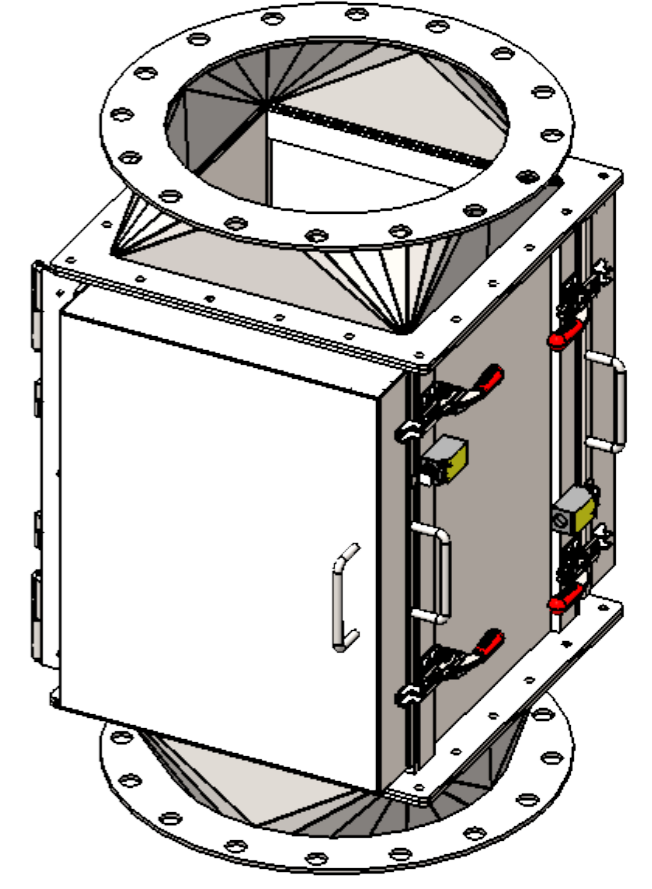
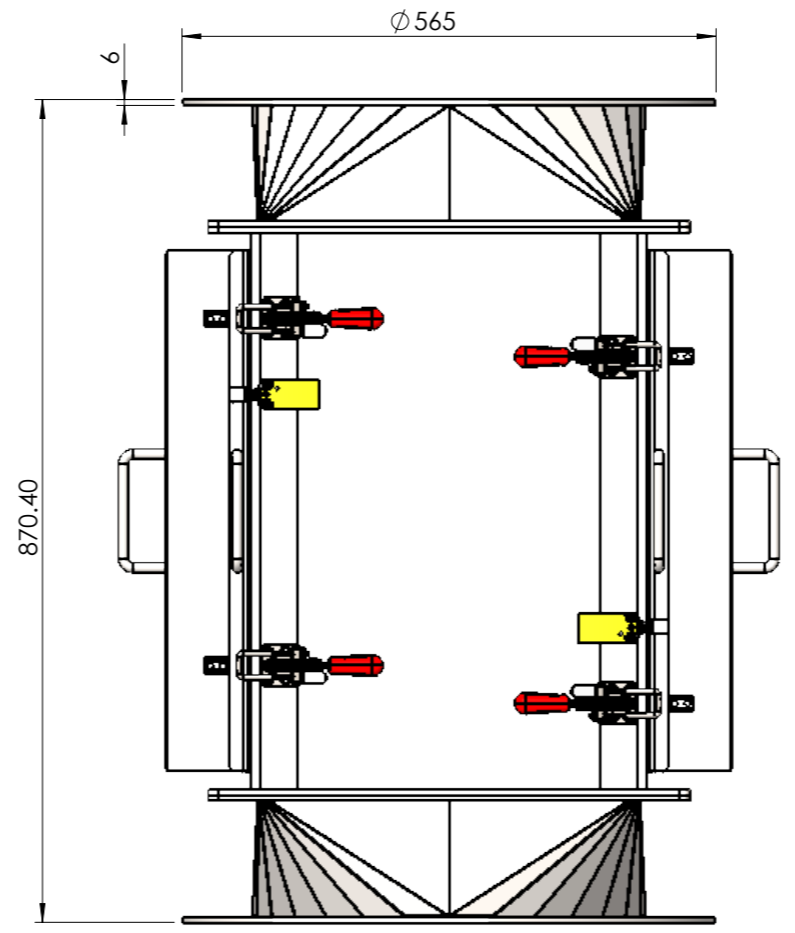
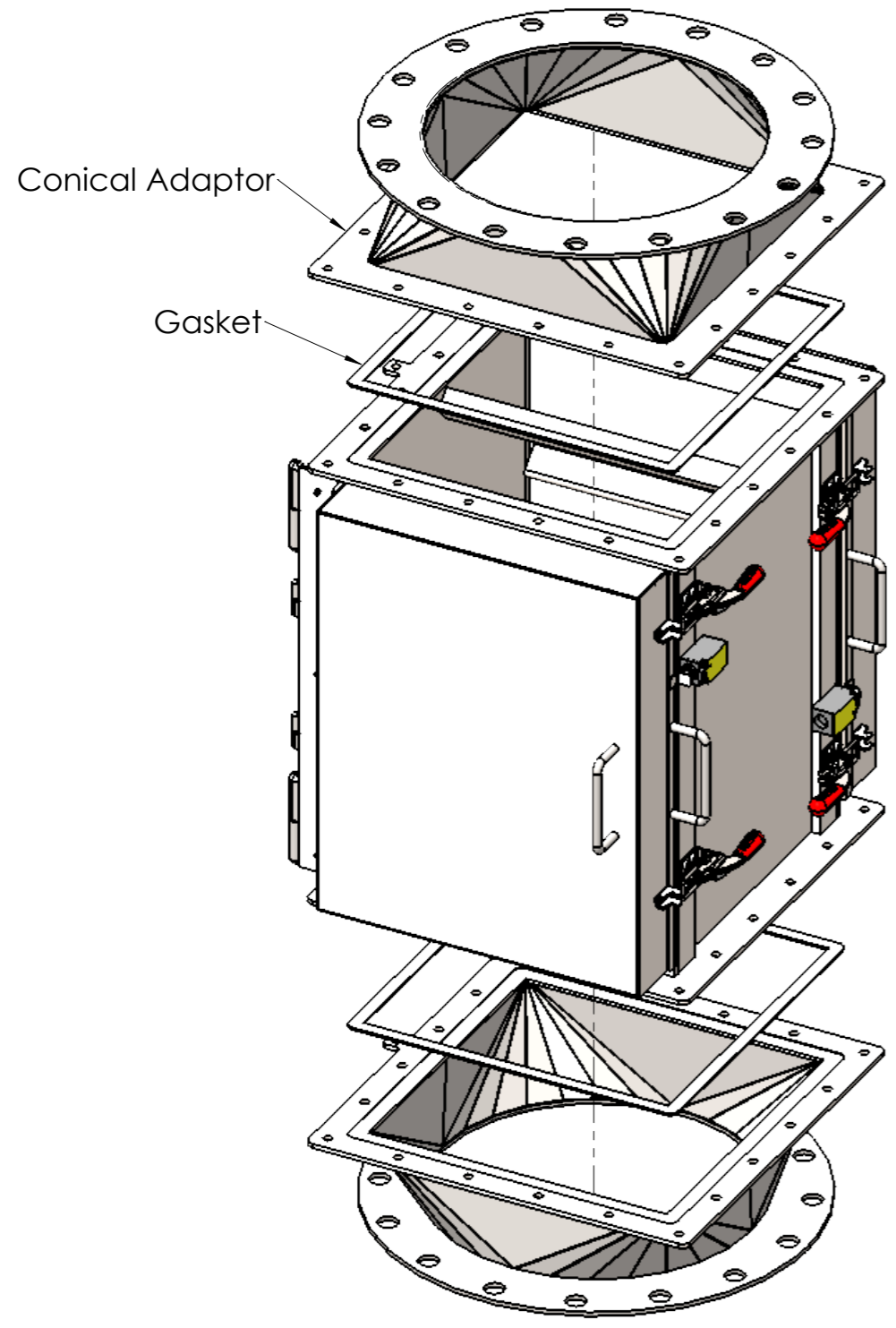
Magnet Specification	
Magnet Grade	DM35
Flux Density	>12000Gs
Structure Details	
Material	SS316L
Surface Treatment	Sublimation
Seal Material	Silicon
Finishing	Ra 32-4 μ in
Welding	Continuous with P240 radial polish
Recommended Parts	
DM202402413	Conical Adaptor (SQ.400 TO NW350)
DM202402418	Conical Adaptor (SQ.400 TO NW400)
DM202402445	Gasket for Rectangular Flanges

Notes:
 Safety Position Switch : Eaton Moeller® series LSE11
 24V/DC 0.2 A (1x NC / 1x NO)
 Product is not suitable for High Pressure

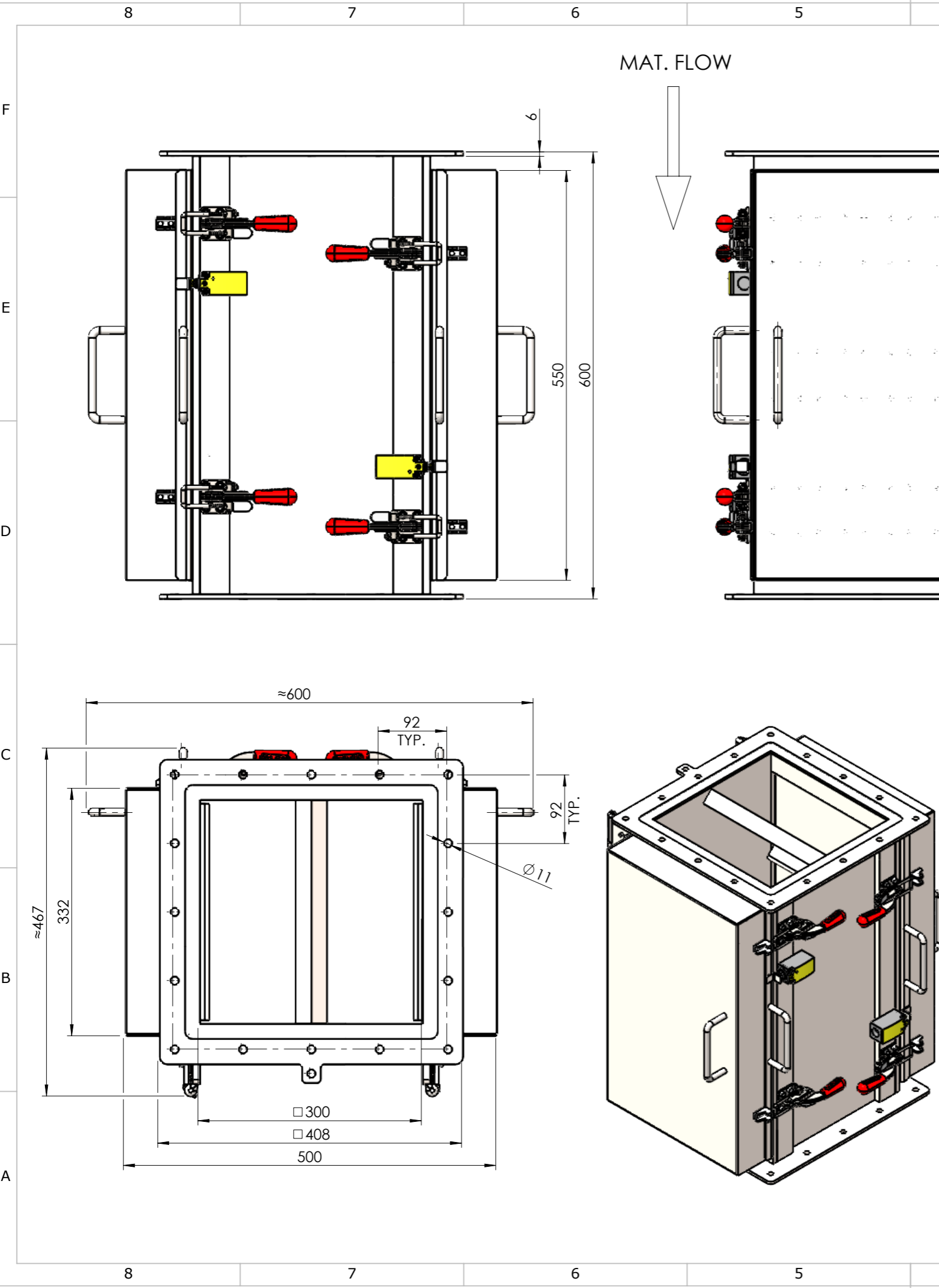
Title: Chutemagnet Food Grade 400 Master Drawing		Article No.:	
Deburr and break sharp edges		ISO 2768m-k	Material:
 IN PARTNERSHIP WITH BRONNEBERG Branchweg 3, 5705 DR Helmond, The Netherlands +31627746820 www.dutchmagnetics.com	Scale 1:8	Units: [mm]	Treatment:
	Drwn By: SJ	Date: 03-05-2024	Finish:
Appr By:	Date:	Weight: 268.49 kg	A3 Rev: 0
Drawing No.: CHM_F_400_Master Drawing			
State: Under Editing			Rev: 0

© Dutch Magnetics. All rights reserved. Reproduction in whole or parts is prohibited without the prior written permission of Dutch Magnetics.

REV.	DESCRIPTION	DATE	REV. BY
0			



Title: CHM_F_400_With Adaptor		Article No.:	
Deburr and break sharp edges		ISO 2768m-k	Material:
 dutch magnetics <small>IN PARTNERSHIP WITH BRONNEBERG</small>		Scale 1:8	Units: [mm] Treatment:
		Drwn By: SJ	Date: 03-05-2024 Finish:
Branchweg 3, 5705 DR Helmond, The Netherlands +31627746820 www.dutchmagnetics.com		Appr By:	Date: Weight: 296.96 kg
© Dutch Magnetics. All rights reserved. Reproduction in whole or parts is prohibited without the prior written permission of Dutch Magnetics.		Drawing No.: CHM_F_400_With Adaptor	
State: Under Editing		A3	
		Rev: 0	



REV.	DESCRIPTION	DATE	REV. BY
0			

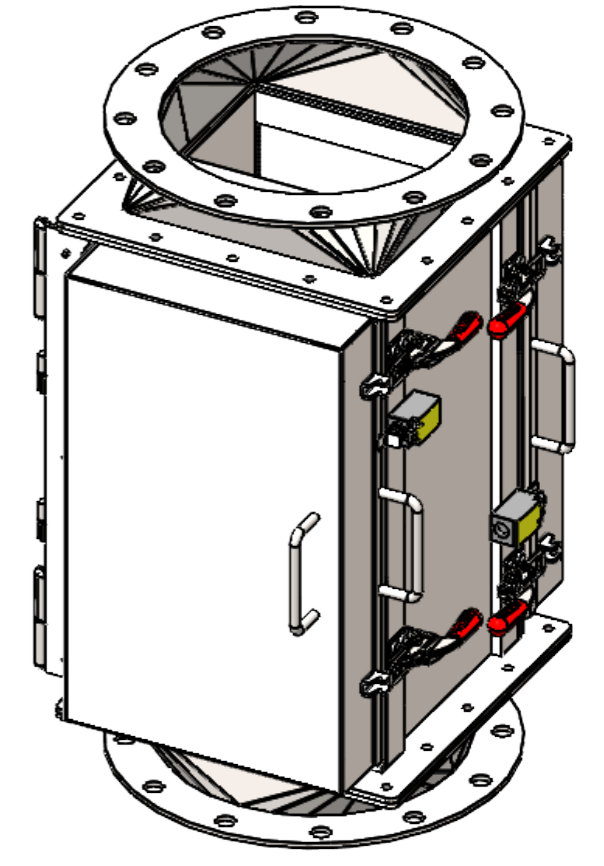
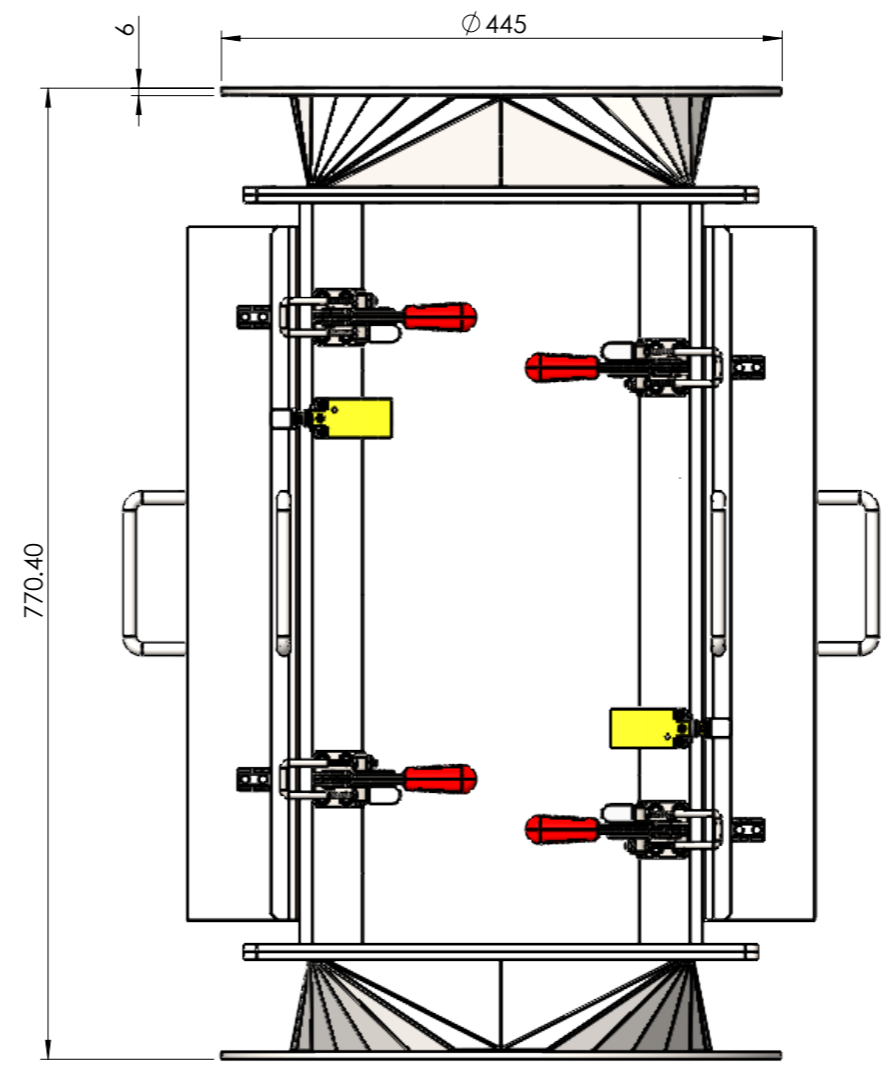
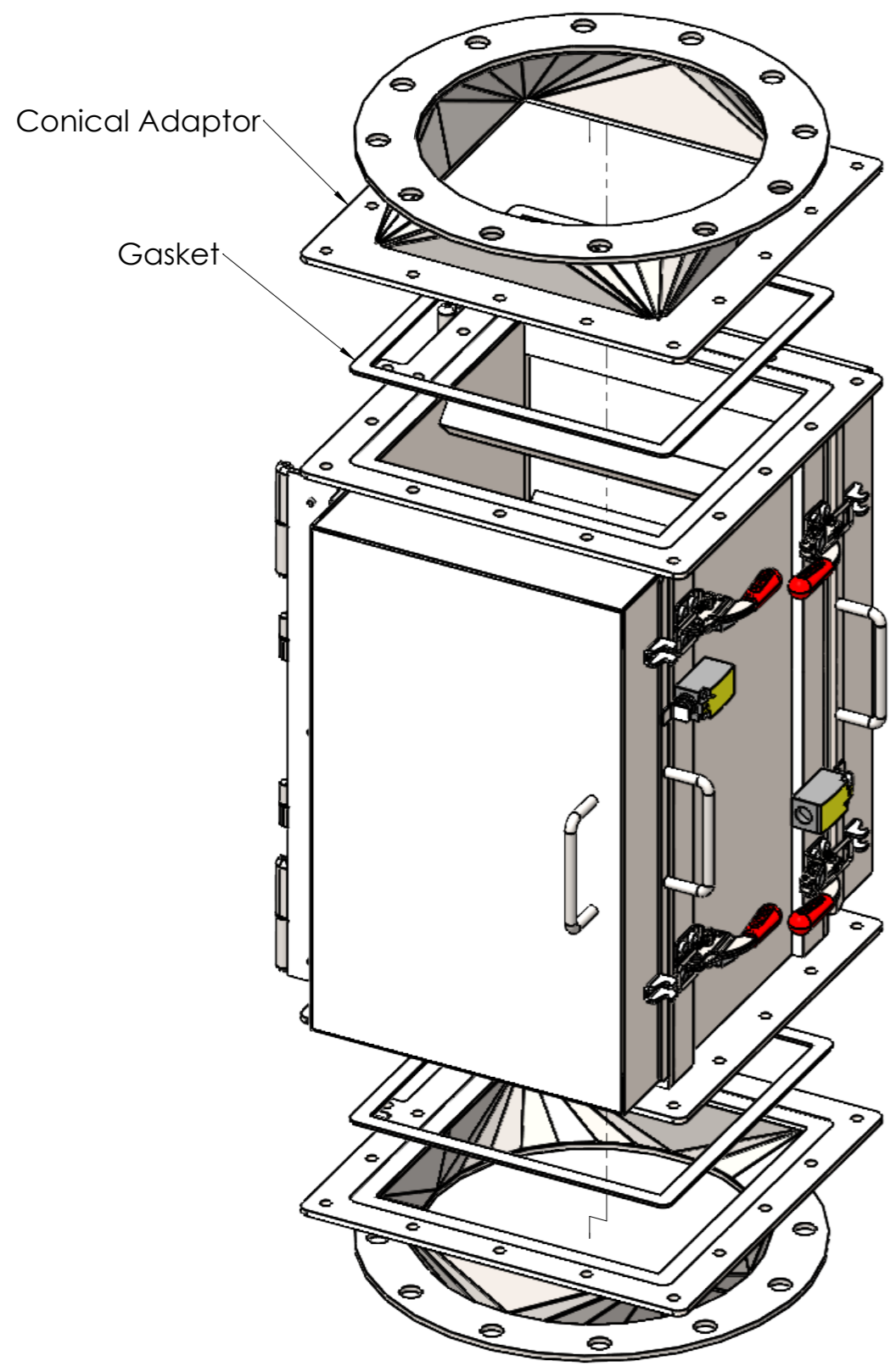
Magnet Specification	
Magnet Grade	DM35
Flux Density	>12000Gs
Structure Details	
Material	SS316L
Surface Treatment	Sublimation
Seal Material	Silicon
Finishing	Ra 32-4 μ in
Welding	Continuous with P240 radial polish
Recommended Parts	
DM202402414	Conical Adaptor
DM202402444	Gasket for Rectangular Flanges

Notes:
 Safety Position Switch : Eaton Moeller® series LSE11
 24V/DC 0.2 A (1x NC / 1x NO)
 Product is not suitable for High Pressure

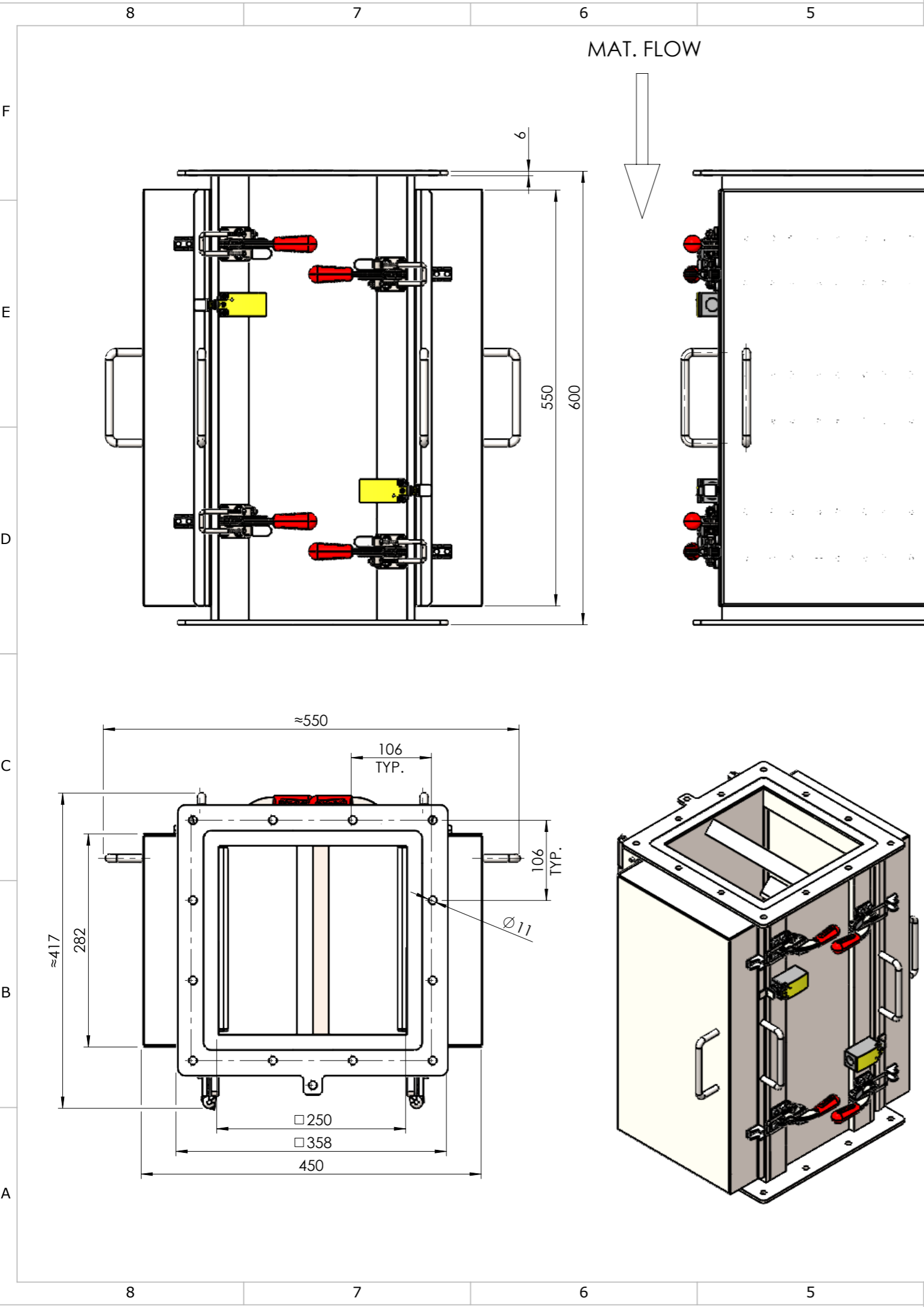
Title: Chutemagnet Food Grade 300 Master Drawing		Article No.:	
Deburr and break sharp edges		ISO 2768m-k	Material:
 IN PARTNERSHIP WITH BRONNEBERG Branchweg 3, 5705 DR Helmond, The Netherlands +31627746820 www.dutchmagnetics.com	Scale 1:6	Units: [mm]	Treatment:
	Drwn By: SJ	Date: 03-05-2024	Finish:
Appr By:	Date:	Weight: 216.26 kg	A3
Drawing No.: CHM_F_300_Master Drawing			
State: Under Editing			Rev: 0

© Dutch Magnetics. All rights reserved. Reproduction in whole or parts is prohibited without the prior written permission of Dutch Magnetics.

REV.	DESCRIPTION	DATE	REV. BY
0			



Title: CHM_F_300_With Adaptor		Article No.:	
Deburr and break sharp edges		ISO 2768m-k	Material:
 dutch magnetics <small>IN PARTNERSHIP WITH BRONNEBERG</small> Branchweg 3, 5705 DR Helmond, The Netherlands +31627746820 www.dutchmagnetics.com	Scale 1:6	Units: [mm]	Treatment:
	Drwn By: SJ	Date: 03-05-2024	Finish:
Appr By:	Date:	Weight: 233.65 kg	A3
Drawing No.: CHM_F_300_With Adaptor			
State: Under Editing			Rev: 0
© Dutch Magnetics. All rights reserved. Reproduction in whole or parts is prohibited without the prior written permission of Dutch Magnetics.			



REV.	DESCRIPTION	DATE	REV. BY
0			

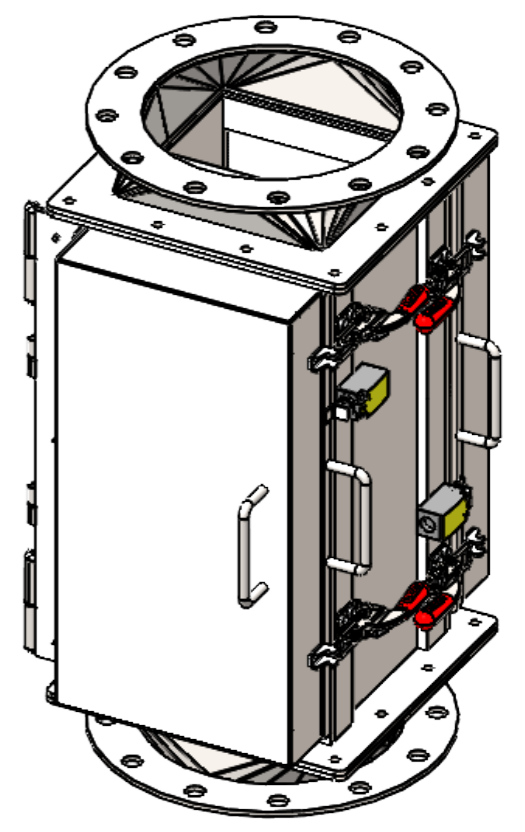
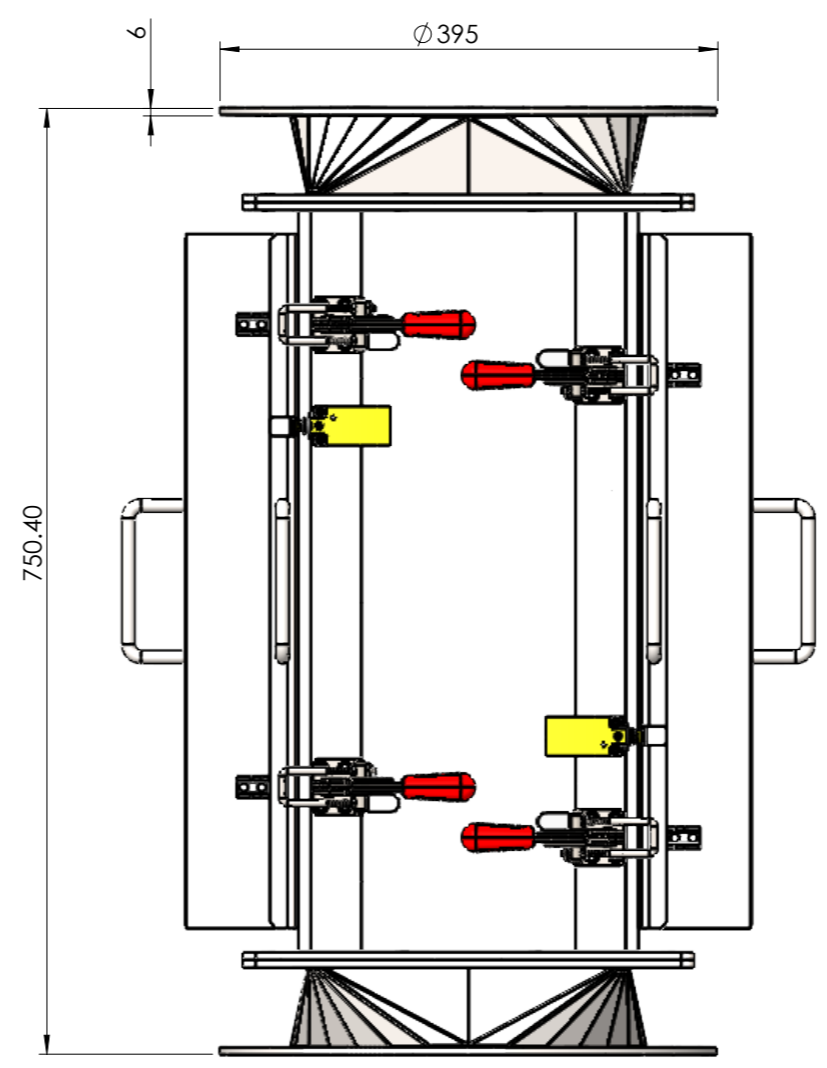
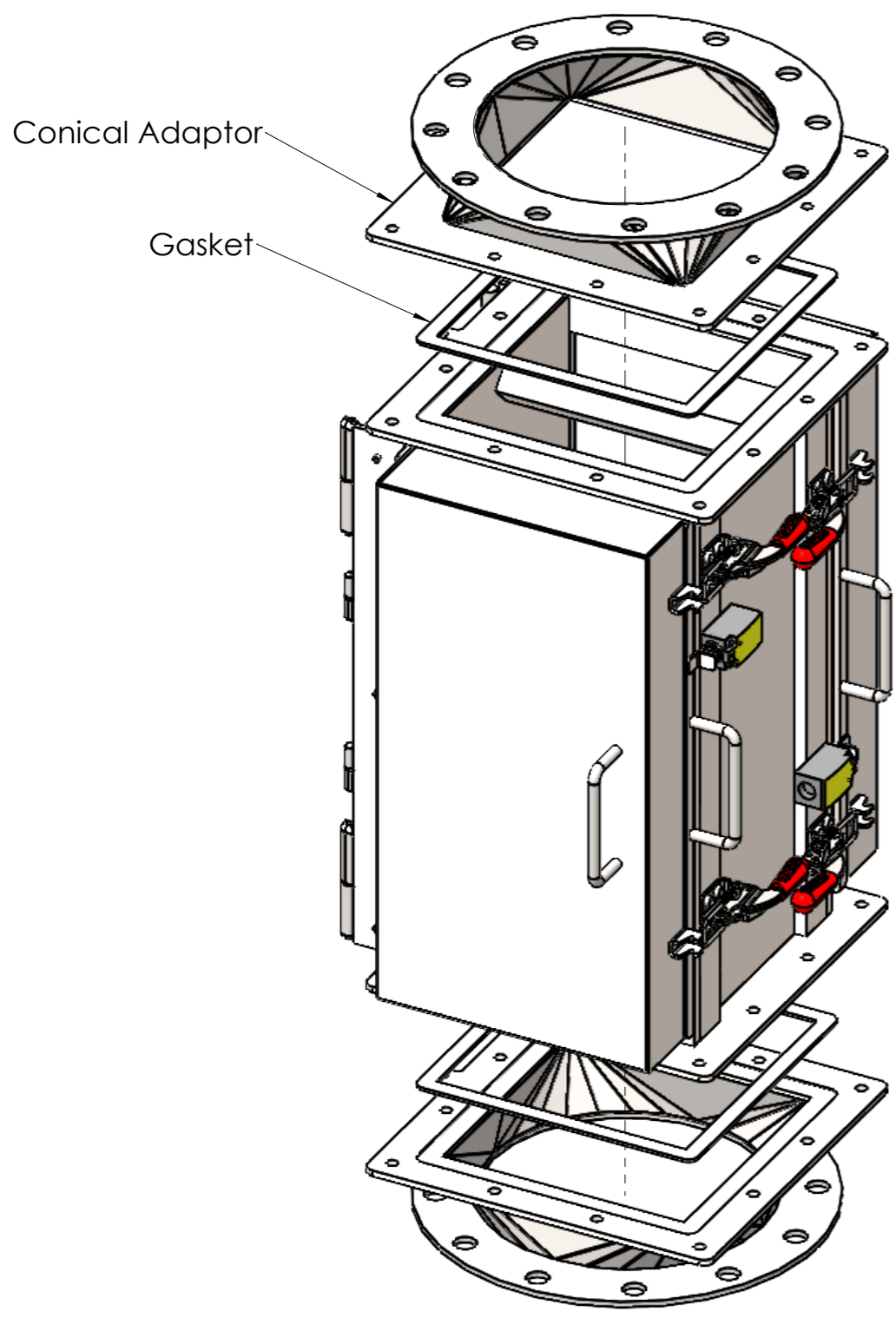
Magnet Specification	
Magnet Grade	DM35
Flux Density	>12000Gs
Structure Details	
Material	SS316L
Surface Treatment	Sublimation
Seal Material	Silicon
Finishing	Ra 32-4 μ in
Welding	Continuous with P240 radial polish
Recommended Parts	
DM202402408	Conical Adaptor
DM202402443	Gasket for Rectangular Flanges

Notes:
 Safety Position Switch : Eaton Moeller® series LSE11
 24V/DC 0.2 A (1x NC / 1x NO)
 Product is not suitable for High Pressure

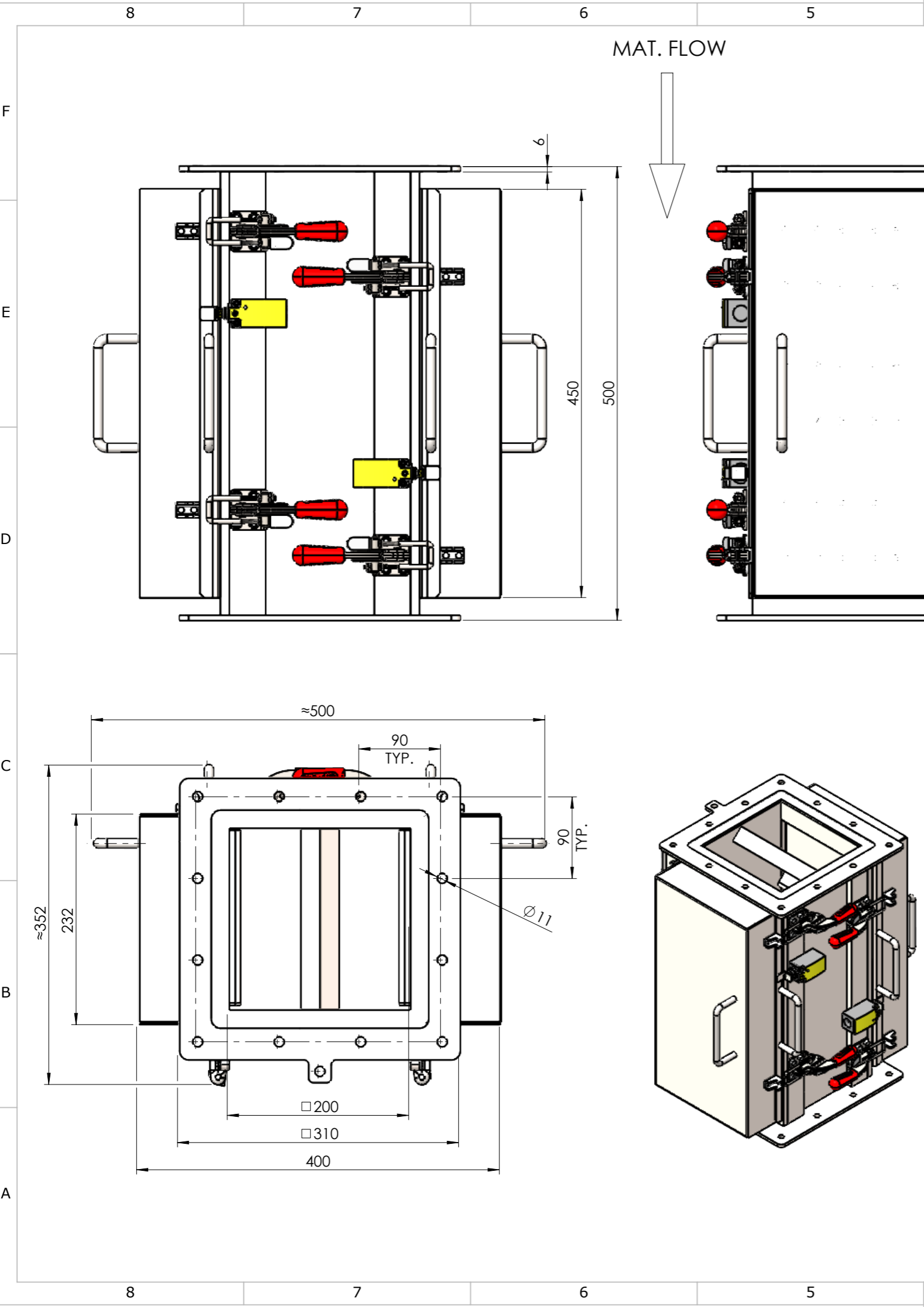
Title: Chutemagnet Food Grade 250 Master Drawing		Article No.:	
Deburr and break sharp edges		ISO 2768m-k	Material:
 IN PARTNERSHIP WITH BRONNEBERG Branchweg 3, 5705 DR Helmond, The Netherlands +31627746820 www.dutchmagnetics.com	Scale 1:6	Units: [mm]	Treatment:
	Drwn By: SJ	Date: 03-05-2024	Finish:
Appr By:	Date:	Weight: 183.84 kg	A3
Drawing No.: CHM_F_250_Master Drawing			
State: Under Editing			Rev: 0

© Dutch Magnetics. All rights reserved. Reproduction in whole or parts is prohibited without the prior written permission of Dutch Magnetics.

REV.	DESCRIPTION	DATE	REV. BY
0			



Title: CHM_F_250_With Adaptor		Article No.:	
Deburr and break sharp edges		ISO 2768m-k	Material:
 dutch magnetics <small>IN PARTNERSHIP WITH BRONNEBERG</small> Branchweg 3, 5705 DR Helmond, The Netherlands +31627746820 www.dutchmagnetics.com	Scale 1:6	Units: [mm]	Treatment:
	Drwn By: SJ	Date: 03-05-2024	Finish:
Appr By:	Date:	Weight: 198.28 kg	A3
Drawing No.: CHM_F_250_With Adaptor			
State: Under Editing			Rev: 0
<small>© Dutch Magnetics. All rights reserved. Reproduction in whole or parts is prohibited without the prior written permission of Dutch Magnetics.</small>			



REV.	DESCRIPTION	DATE	REV. BY
0			

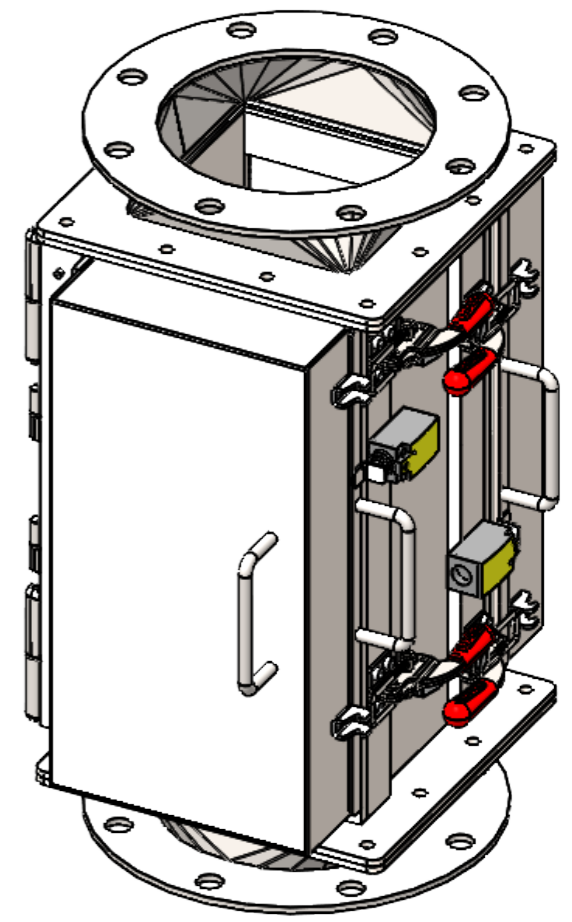
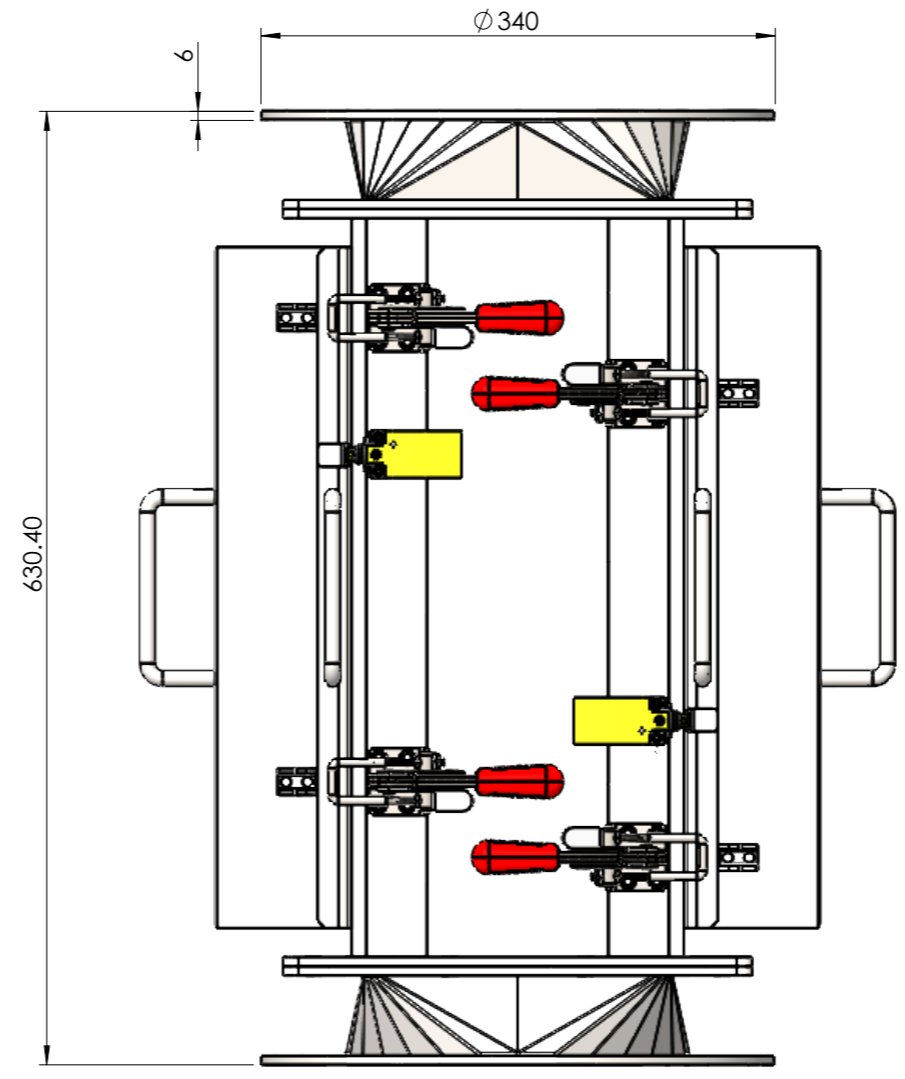
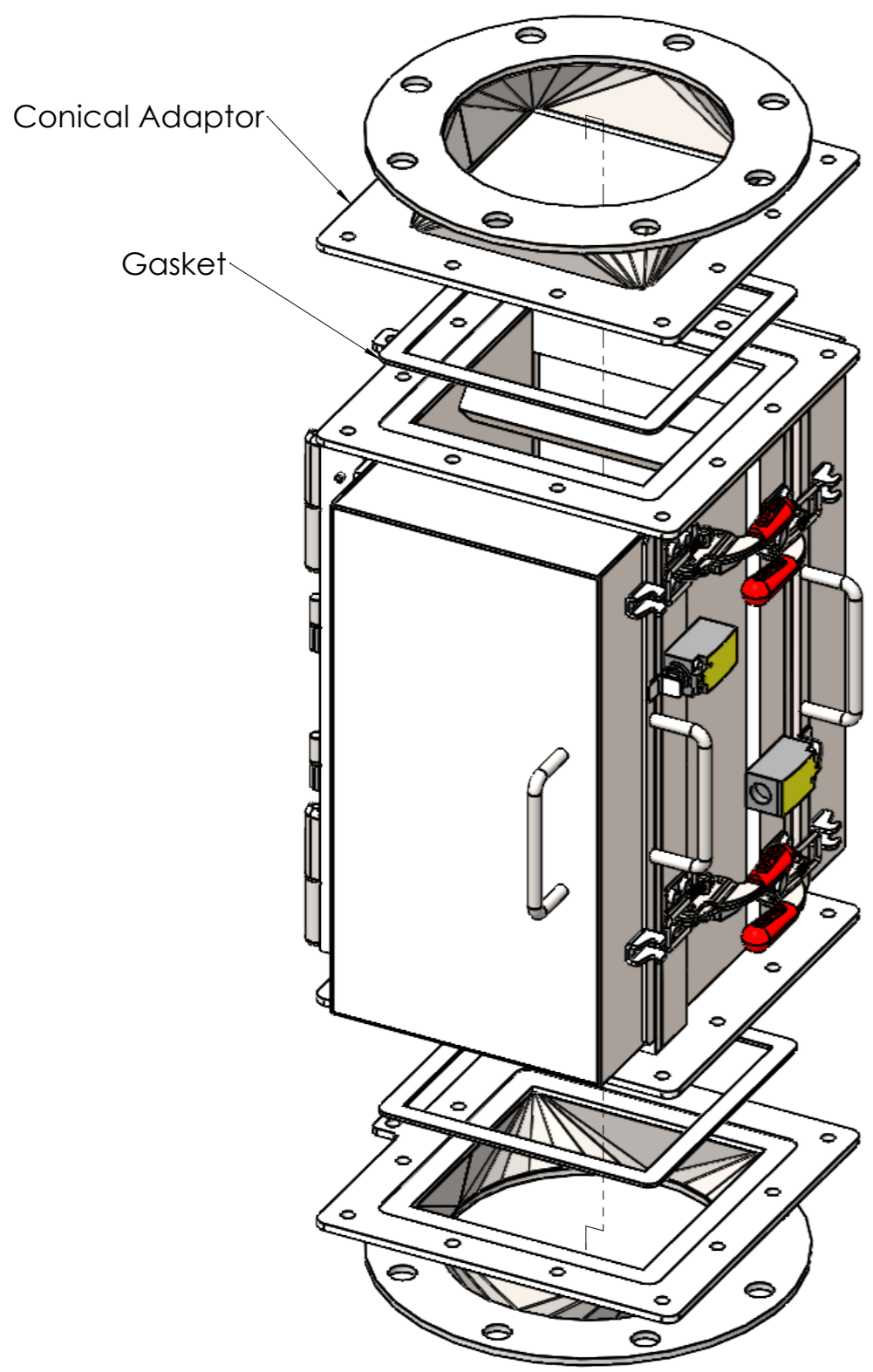
Magnet Specification	
Magnet Grade	DM35
Flux Density	>12000Gs
Structure Details	
Material	SS316L
Surface Treatment	Sublimation
Seal Material	Silicon
Finishing	Ra 32-4 μ in
Welding	Continuous with P240 radial polish
Recommended Parts	
DM202402404	Conical Adaptor
DM202402442	Gasket for Rectangular Flanges

Notes:
 Safety Position Switch : Eaton Moeller® series LSE11
 24V/DC 0.2 A (1x NC / 1x NO)
 Product is not suitable for High Pressure

Title: Chutemagnet Food Grade 200 Master Drawing		Article No.:	
Deburr and break sharp edges		ISO 2768m-k	Material:
 dutch magnetics <small>IN PARTNERSHIP WITH BRONNEBERG</small> Branchweg 3, 5705 DR Helmond, The Netherlands +31627746820 www.dutchmagnetics.com	Scale 1:5	Units: [mm]	Treatment:
	Drwn By: SJ	Date: 03-05-2024	Finish:
Appr By:	Date:	Weight: 131.12 kg	A3
Drawing No.: CHM_F_200_Master Drawing			
State: Under Editing			Rev: 0

© Dutch Magnetics. All rights reserved. Reproduction in whole or parts is prohibited without the prior written permission of Dutch Magnetics.

REV.	DESCRIPTION	DATE	REV. BY
0			



Title: CHM_F_200_With Adaptor		Article No.:	
Deburr and break sharp edges		ISO 2768m-k	Material:
 dutch magnetics <small>IN PARTNERSHIP WITH BRONNEBERG</small> Branchweg 3, 5705 DR Helmond, The Netherlands +31627746820 www.dutchmagnetics.com	Scale 1:5	Units: [mm]	Treatment:
	Drwn By: SJ	Date: 03-05-2024	Finish:
Appr By:	Date:	Weight: 142.90 kg	A3
Drawing No.: CHM_F_200_With Adaptor			
State: Under Editing			Rev: 0
<small>© Dutch Magnetics. All rights reserved. Reproduction in whole or parts is prohibited without the prior written permission of Dutch Magnetics.</small>			